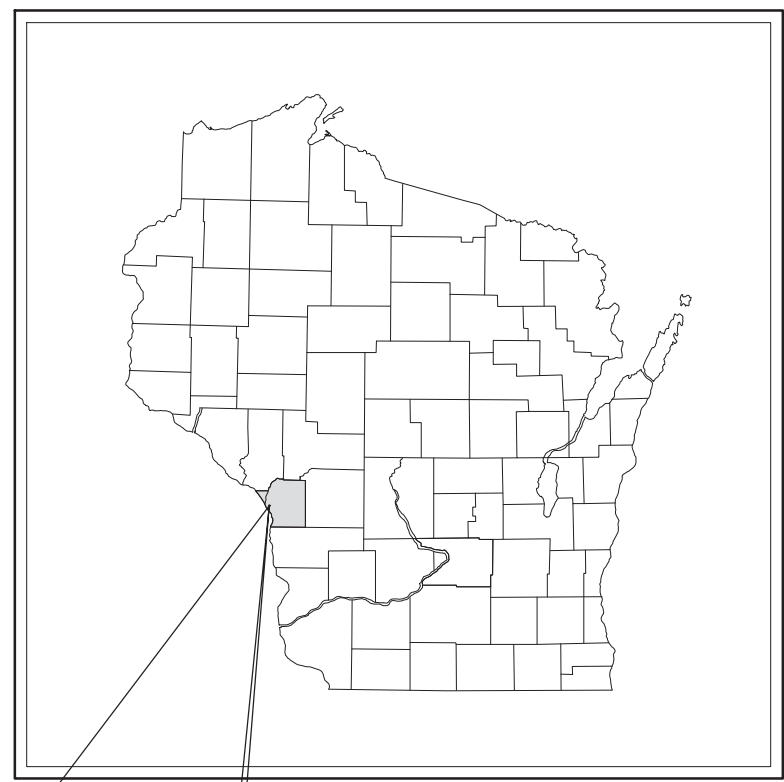




THUNDERBIRD HILLS SUBDIVISION TOWN OF ONALASKA

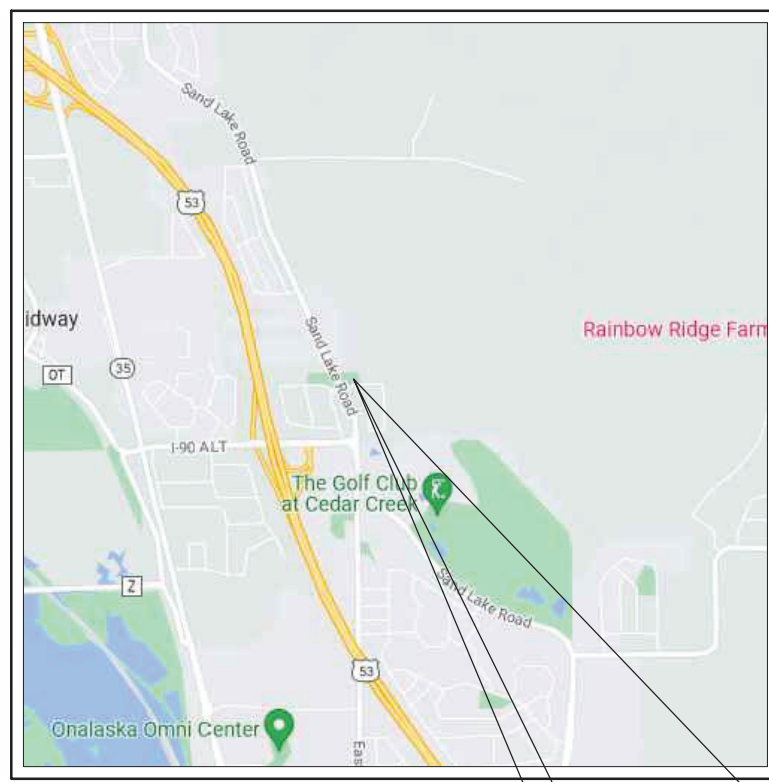
TOWN OF ONALASKA LA CROSSE COUNTY, WI



PROJECT LOCATION



NO SCALE



TOWN OF ONALASKA
LOCATION PLAN

PROJECT LOCATION

TABLE OF CONTENTS:

<u>GENERAL</u>	
G1.0	TITLE PAGE
G1.1	LEGEND & NOTES
<u>CIVIL</u>	
C1.0 - 1.1	EXISTING SITE PLAN
C2.0 - 2.3	PROPOSED SITE PLAN
C3.0 - 3.5	PROPOSED GRADING & E.C.
C4.0	STORM SEWER CONSTRUCTION DETAILS
C5.0	STORM SEWER INLETS AND GRATES
C6.0	EROSION CONTROL SPECIFICATIONS
C7.0	EROSION CONTROL DETAILS

ENGINEER SEAL:

General Engineering Company
 P.O. Box 340 • 916 Silver Lake Dr. • Portage, WI 53901
 608-742-2169 (Office) • 608-742-2592 (Fax)
 www.generalengineering.net
This document contains confidential or proprietary information of General Engineering Company. Neither this document nor the information herein is to be reproduced, distributed, used or disclosed either in whole or in part except as specifically authorized by General Engineering Company.

TITLE PAGE
THUNDERBIRD HILLS SUBDIVISION
TOWN OF ONALASKA
TOWN OF ONALASKA
LACROSSE COUNTY, WI

REVISIONS	NO.	BY	DATE

SCALE

DRAWN BY JLM
 REVIEWED BY LAL
 ISSUE DATE MARCH 2023
 GEC FILE NO. 2-0122-44G
 SHEET NO.

G1.0

CONSTRUCTION NOTES

GENERAL

1. ALL EXISTING UNDERGROUND UTILITY LOCATIONS SHOWN ARE APPROXIMATE AND SHOULD BE FIELD VERIFIED, BY CONTRACTOR, PRIOR TO CONSTRUCTION.
2. ALL ASPHALT REPAIRS/REPLACEMENT SHALL BE SAWCUT TO MATCH EXISTING PAVEMENT AS SHOWN ON THE PLANS OR AS DIRECTED BY THE ENGINEER.

STORM SEWER

1. STORM SEWER PIPE LENGTHS ARE SHOWN MEASURED FROM CENTER OF STRUCTURE TO CENTER OF STRUCTURE.

GRADING & EROSION CONTROL NOTES

1. ALL EROSION CONTROL MEASURES SHALL BE IN PLACE PRIOR TO CONSTRUCTION.
2. SILT FENCE, TEMPORARY SEDIMENT BASIN, & ROCK CONSTRUCTION ENTRANCE SHALL BE INSTALLED PRIOR TO ANY LAND DISTURBING ACTIVITIES, INCLUDING CLEARING & GRUBBING.
3. ALL STORM SEWER INLETS SHALL HAVE INLET PROTECTION TYPE-D INSTALLED UPON INLET INSTALLATION.
4. CONTRACTOR IS RESPONSIBLE FOR WEEKLY DNR INSPECTION REPORTS IN ACCORDANCE WITH NR 216.46(9).
5. ADDITIONAL EROSION CONTROL MEASURES MAY BE ADDED ON AN AS-NEEDED BASIS.
6. THE POND SHALL BE CONSTRUCTED PRIOR TO MASS LAND DISTURBANCE.
7. ANY AREAS WHERE GRADING IS COMPLETE SHALL BE STABILIZED WITH FERTILIZER, SEED, & MULCH AS SOON AS POSSIBLE.
8. ALL BEST MANAGEMENT PRACTICES WILL BE INSTALLED BY THE TIME THE CONSTRUCTION SITE IS CONSIDERED STABILIZED.
9. A COPY OF THIS EROSION CONTROL PLAN SHALL BE KEPT ON SITE THROUGHOUT THE DURATION OF THE PROJECT.
10. STOCKPILES LEFT INACTIVE FOR 7 DAYS SHALL BE SEED AND SURROUNDED BY SILT FENCE.
11. ALL WASTE AND UNUSED BUILDING MATERIALS (INCLUDING GARBAGE, DEBRIS, CLEANING WASTES, OR OTHER CONSTRUCTION MATERIALS) SHALL BE PROPERLY DISPOSED OF AND NOT ALLOWED TO BE CARRIED BY RUNOFF INTO RECEIVING CHANNEL.
12. EROSION CONTROL MAT CLASS I, TYPE A WILL BE USED IN NON-CHANNEL AREAS AND CLASS I, TYPE B WILL BE USED IN CHANNEL AREAS.
13. STREETS SHALL BE SWEEPED AT THE END OF EACH WORK DAY OR AS DIRECTED BY THE MUNICIPALITY.
14. TRACKING PADS SHALL BE USED AT THE CONSTRUCTION ENTRANCE AND EXITS.
15. ALTHOUGH ROCK CONSTRUCTION TRACKING PADS MAY NOT BE SHOWN ON THE PLANS, THE CONTRACTOR SHALL INSTALL THEM AS NECESSARY OR AS DIRECTED BY THE ENGINEER TO MINIMIZE TRACKING ONTO ADJACENT STREETS. THESE PADS ARE CONSIDERED INCIDENTAL TO THE WORK AND WILL NOT BE MEASURED OR PAID FOR SEPARATELY.
16. CONTRACTOR WILL BE RESPONSIBLE FOR ALL DUST CONTROL.
17. SEDIMENT WILL BE REMOVED FROM BEHIND SEDIMENT FENCES AND BARRIERS BEFORE IT REACHES A DEPTH THAT IS EQUAL TO HALF THE BARRIER'S HEIGHT.
18. BREAKS AND GAPS IN SEDIMENT FENCES AND BARRIERS WILL BE REPAIRED IMMEDIATELY. DECOMPOSING STRAW BALES WILL BE REPLACED (TYPICAL BALE LIFE IS THREE MONTHS).
19. ALL SEDIMENT THAT MOVES OFF-SITE DUE TO CONSTRUCTION ACTIVITY OR STORM EVENTS WILL BE CLEANED UP BEFORE THE END OF THE SAME WORKDAY.
20. ALL INSTALLED EROSION CONTROL PRACTICES WILL BE MAINTAINED UNTIL THE DISTURBED AREAS THEY PROTECT ARE STABILIZED.
21. ALL EROSION CONTROL MAT SHALL BE INSTALLED WITHIN 24 HOURS OF FINAL GRADES BEING ESTABLISHED.

EXISTING LINETYPES LEGEND

- San — SANITARY SEWER
- ST — STORM SEWER
- WM — WATER MAIN
- FM — FORCE MAIN
- E — ELECTRIC
- OE — OVERHEAD ELECTRIC
- G — GAS
- FO — FIBER OPTIC
- T — TELEPHONE
- TV — TV
- X — FENCE
- GR — GUARD RAIL
- GL — GRADING LIMITS
- SF — SILT FENCE
- DB — DOUBLE SEDIMENT BARRIER
- ||||| TRAIN TRACKS
- ~~~~~ TREELINE

SYMBOLS LEGEND

- EXISTING MANHOLE
- PROPOSED MANHOLE
- EXISTING HYDRANT
- PROPOSED HYDRANT
- VALVE
- CURB STOP
- TRACER WIRE TERMINAL BOX
- WELL
- PROPERTY CORNER
- LIGHT POLE
- POWER / TELEPHONE POLE
- GUY WIRE
- UTILITY PEDESTAL SIGN
- SOIL BORING
- MONITORING WELL
- MAILBOX
- POTENTIAL HAZARD
- BENCHMARK
- CONTROL POINT
- DECIDUOUS TREE
- CONIFEROUS TREE
- HANDICAP SYMBOL

ABBREVIATION LIST

- B-B = BACK TO BACK
- BOC = BACK OF CURB
- BOP = BOTTOM OF PIPE
- BOW = BOTTOM OF WALL
- C-C = CENTER TO CENTER
- CL = CENTERLINE
- CP = CONTROL POINT
- DIA = DIAMETER
- ELEV = ELEVATION
- EOG = EDGE OF GRAVEL
- EOP = EDGE OF PAVEMENT
- EX = EXISTING
- FL = FLOW LINE
- FM = FORCE MAIN
- HC = HORIZONTAL CURVE
- HP = HIGH POINT
- IE = INVERT ELEVATION
- INL = INLET
- INV = INVERT
- IOS = INSIDE OF STRUCTURE
- L = LENGTH
- LN = LINE
- LP = LOW POINT
- MH = MANHOLE
- MIN = MINIMUM
- MP = MIDPOINT
- PC = POINT OF CURVE
- PI = POINT OF INTERSECTION
- PRO = PROPOSED
- PT = POINT OF TANGENT
- PVC = POINT OF VERTICAL CURVE
- PVI = POINT OF VERTICAL INTERSECTION
- PVMT = PAVEMENT
- PVT = POINT OF VERTICAL TANGENT
- R = RADIUS
- ROW = RIGHT OF WAY
- S = SANITARY SEWER SERVICE LATERAL
- SAN = SANITARY SEWER
- SE = SPOT ELEVATION
- ST = STORM SEWER
- STA = STATION
- STD = STANDARD
- TC = TOP OF CURB
- TOP = TOP OF PIPE
- TOW = TOP OF WALL
- TYP = TYPICAL
- UOS = UNLESS OTHERWISE SPECIFIED
- VC = VERTICAL CURVE
- W = WATER MAIN SERVICE LATERAL
- WM = WATER MAIN

DIGGERS HOTLINE NOTE



OWNER

TOWN OF ONALASKA
 N 5589 COMMERCE ROAD
 ONALASKA, WI 54650
 PHONE: (608) 783-4958

UTILITIES

- 1. ELECTRIC XCEL ENERGY**
 200 BAINBRIDGE STREET
 LACROSSE, WI 54603
 PHONE: (800) -895-4999
- 2. TELEPHONE CENTURY LINK**
 40 COPELAND AVENUE #109B
 LACROSSE, WI 54603
 PHONE: (608) 796-5440
- 3. GAS MIDWEST NATURAL GAS INCORPORATED**
 3600 STATE HIGHWAY 157
 LA CROSSE, WI 54601
 PHONE: (608) 781-1011
- 4. CABLE TV CHARTER COMMUNICATIONS**
 1228 12TH AVE
 ONALASKA, WI 54650
 PHONE: (888)438-2427
- 5. MUNICIPALITY TOWN OF ONALASKA**
 N 5589 COMMERCE ROAD
 ONALASKA, WI 54650
 PHONE: (608)783-4958



General Engineering Company
 P.O. Box 340 • 916 Silver Lake Dr. • Portage, WI 53901
 608-742-2169 (Office) • 608-742-2592 (Fax)
 www.generalengineering.net
 This document contains confidential or proprietary information of General Engineering Company. Neither this document nor the information herein is to be reproduced, distributed, used or disclosed either in whole or in part except as specifically authorized by General Engineering Company.

LEGEND & NOTES
THUNDERBIRD HILLS SUBDIVISION
TOWN OF ONALASKA
 TOWN OF ONALASKA
 LA CROSSE COUNTY, WI

REVISIONS	NO.	BY	DATE

SCALE

DRAWN BY	SEB
REVIEWED BY	LAL
ISSUE DATE	MARCH 2023
GEC FILE NO.	2-0122-44G
SHEET NO.	

NOTES:

1. ALL EXISTING UNDERGROUND UTILITY LOCATIONS ARE APPROXIMATE AND SHOULD BE FIELD VERIFIED PRIOR TO CONSTRUCTION.
2. ALL GENERAL NOTES FOUND ON SHEET G1.1.



DIAL 811 or 1-800-242-8511

To Obtain Location of Participants Underground Facilities Before You Dig in Wisconsin
Wis Statute 182.0175 (1974)
Requires Min. 3 Work Days Notice Before You Excavate

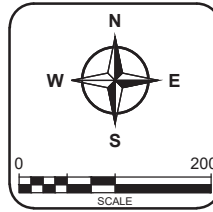


General Engineering Company
 P.O. Box 340 • 916 Silver Lake Dr. • Portage, WI 53901
 608-742-2169 (Office) • 608-742-2592 (Fax)
 www.generalengineering.net

This document contains confidential or proprietary information of General Engineering Company. Neither this document nor the information herein is to be reproduced, distributed, used or disclosed either in whole or in part except as specifically authorized by General Engineering Company.

EXISTING SITE PLAN
THUNDERBIRD HILLS SUBDIVISION
TOWN OF ONALASKA
 TOWN OF ONALASKA
 LA CROSSE COUNTY, WI

REVISIONS	NO.	BY	DATE

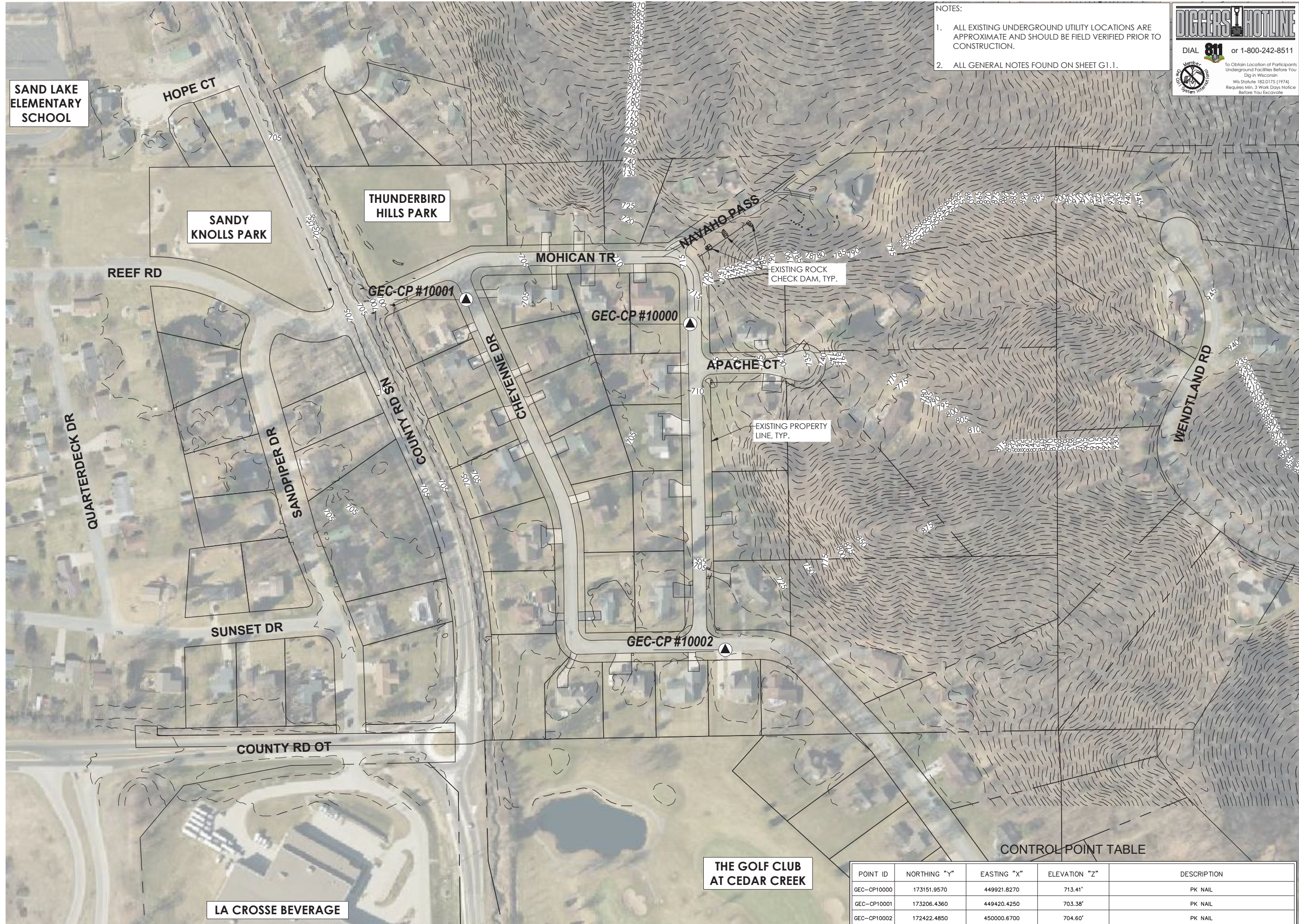


DRAWN BY: SEB
 REVIEWED BY: LAL
 ISSUE DATE: MARCH 2023
 GEC FILE NO.: 2-0122-44G
 SHEET NO.

C1.0

CONTROL POINT TABLE

POINT ID	NORTHING "Y"	EASTING "X"	ELEVATION "Z"	DESCRIPTION
GEC-CP10000	173151.9570	449921.8270	713.41'	PK NAIL
GEC-CP10001	173206.4360	449420.4250	703.38'	PK NAIL
GEC-CP10002	172422.4850	450000.6700	704.60'	PK NAIL

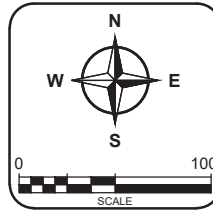




General Engineering Company
 P.O. Box 340 • 916 Silver Lake Dr. • Portage, WI 53901
 608-742-2169 (Office) • 608-742-2592 (Fax)
 www.generalengineering.net
This document contains confidential or proprietary information of General Engineering Company. Neither this document nor the information herein is to be reproduced, distributed, used or disclosed either in whole or in part except as specifically authorized by General Engineering Company.

EXISTING SITE PLAN
THUNDERBIRD HILLS SUBDIVISION
TOWN OF ONALASKA
 TOWN OF ONALASKA
 LA CROSSE COUNTY, WI

REVISIONS	NO.	BY	DATE



DRAWN BY: SEB
 REVIEWED BY: LAL
 ISSUE DATE: MARCH 2023
 GEC FILE NO.: 2-0122-44G
 SHEET NO.:

C1.1



THUNDERBIRD HILLS PARK

REEF RD

MOHICAN TR

NAVAHO PASS

EXISTING ROCK CHECK DAM, TYP.

EXISTING PROPERTY LINE, TYP.

APACHE CT

CHEYENNE DR

COUNT RD SN

EXISTING DITCH, TYP.

EXISTING CONTOURS, TYP.



DIAL **811** or 1-800-242-8511
 To Obtain Location of Participants
 Underground Facilities Before You
 Dig in Wisconsin
 Wis Statute 182.0175 (1974)
 Requires Min. 3 Work Days Notice
 Before You Excavate

- NOTES:
1. ALL EXISTING UNDERGROUND UTILITY LOCATIONS ARE APPROXIMATE AND SHOULD BE FIELD VERIFIED PRIOR TO CONSTRUCTION.
 2. ALL GENERAL NOTES FOUND ON SHEET G1.1.



General Engineering Company

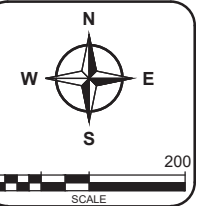
P.O. Box 340 • 916 Silver Lake Dr. • Portage, WI 53901
608-742-2169 (Office) • 608-742-2592 (Fax)
www.generalengineering.net

This document contains confidential or proprietary information of General Engineering Company. Neither this document nor the information herein is to be reproduced, distributed, used or disclosed either in whole or in part except as specifically authorized by General Engineering Company.

PROPOSED SITE PLAN
THUNDERBIRD HILLS SUBDIVISION
TOWN OF ONALASKA

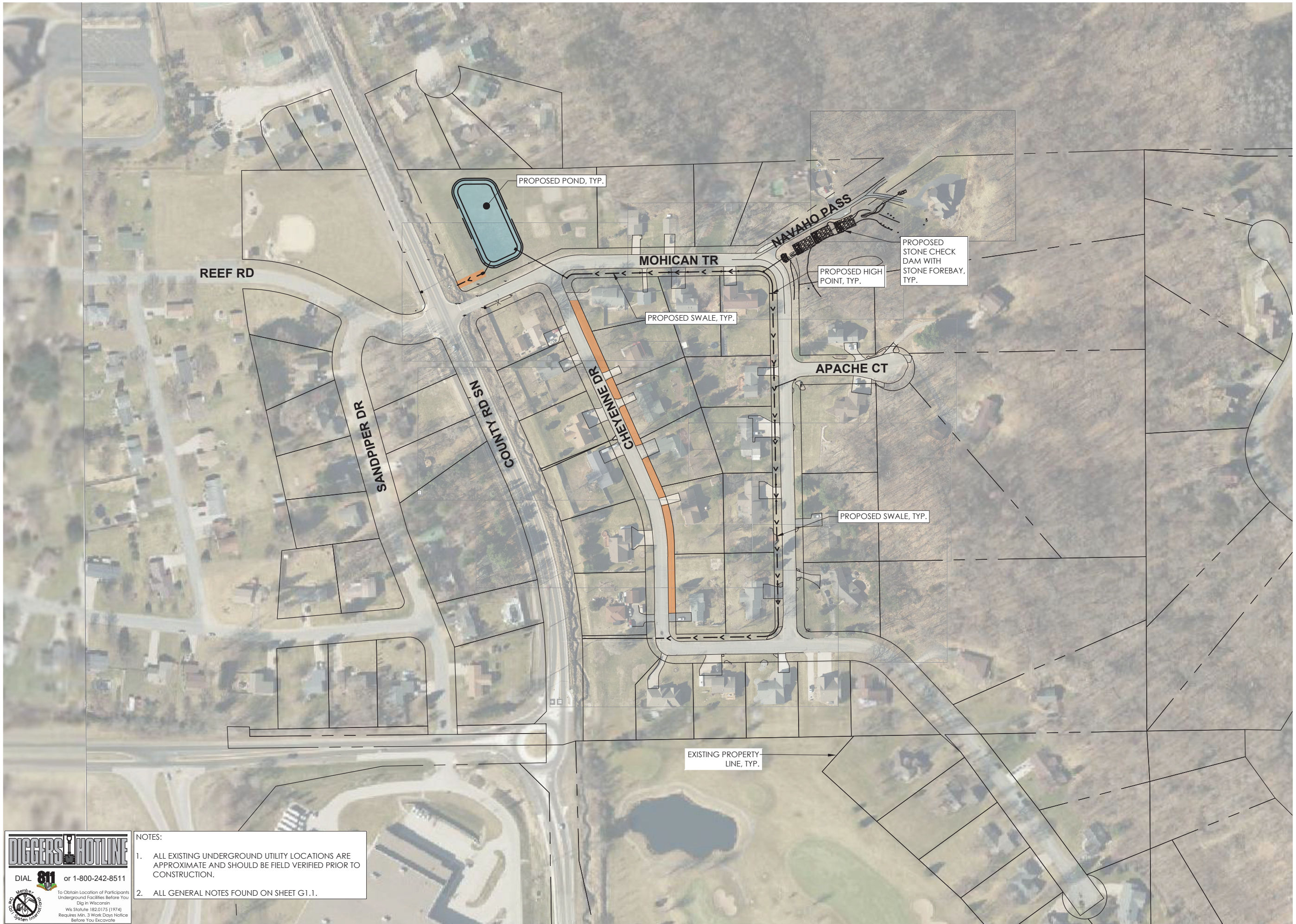
TOWN OF ONALASKA
LACROSSE COUNTY, WI

REVISIONS	NO.	BY	DATE



DRAWN BY	JLM
REVIEWED BY	BRB
ISSUE DATE	MARCH 2023
GEC FILE NO.	2-0122-44G
SHEET NO.	

C2.0



NOTES:

1. ALL EXISTING UNDERGROUND UTILITY LOCATIONS ARE APPROXIMATE AND SHOULD BE FIELD VERIFIED PRIOR TO CONSTRUCTION.
2. ALL GENERAL NOTES FOUND ON SHEET G1.1.

DIGGERS HOTLINE
DIAL **811** or 1-800-242-8511

To Obtain Location of Participants Underground Facilities Before You Dig in Wisconsin
Requires Min. 3 Work Days Notice Before You Excavate
Wis. Statute 182.0175 (1974)



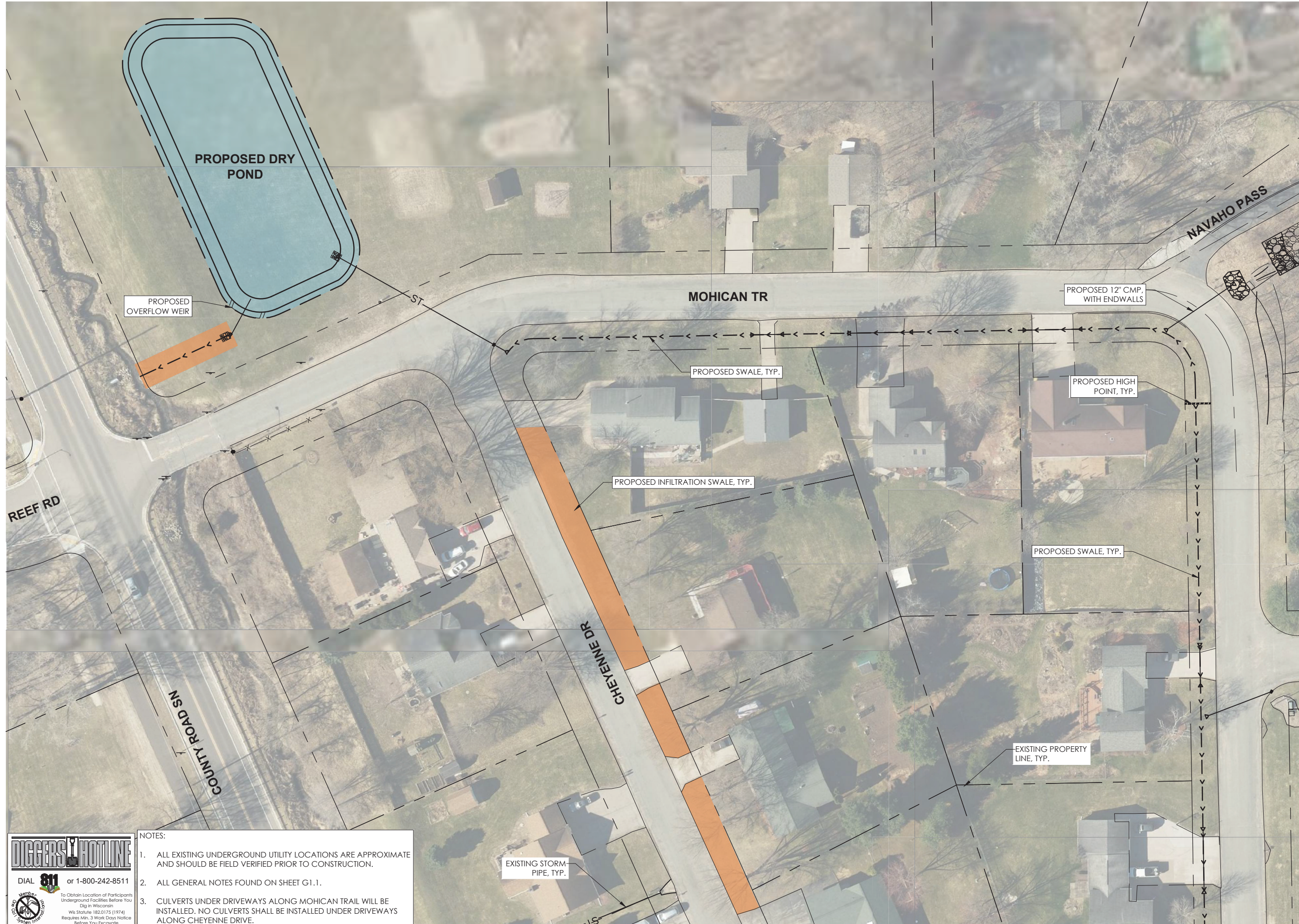
General Engineering Company

P.O. Box 340 • 916 Silver Lake Dr. • Portage, WI 53901
608-742-2169 (Office) • 608-742-2592 (Fax)
www.generalengineering.net

This document contains confidential or proprietary information of General Engineering Company. Neither this document nor the information herein is to be reproduced, distributed, used or disclosed either in whole or in part except as specifically authorized by General Engineering Company.

PROPOSED SITE PLAN
THUNDERBIRD HILLS SUBDIVISION
TOWN OF ONALASKA

TOWN OF ONALASKA
LACROSSE COUNTY, WI

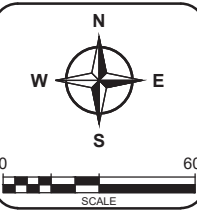


- NOTES:
1. ALL EXISTING UNDERGROUND UTILITY LOCATIONS ARE APPROXIMATE AND SHOULD BE FIELD VERIFIED PRIOR TO CONSTRUCTION.
 2. ALL GENERAL NOTES FOUND ON SHEET G1.1.
 3. CULVERTS UNDER DRIVEWAYS ALONG MOHICAN TRAIL WILL BE INSTALLED. NO CULVERTS SHALL BE INSTALLED UNDER DRIVEWAYS ALONG CHEYENNE DRIVE.

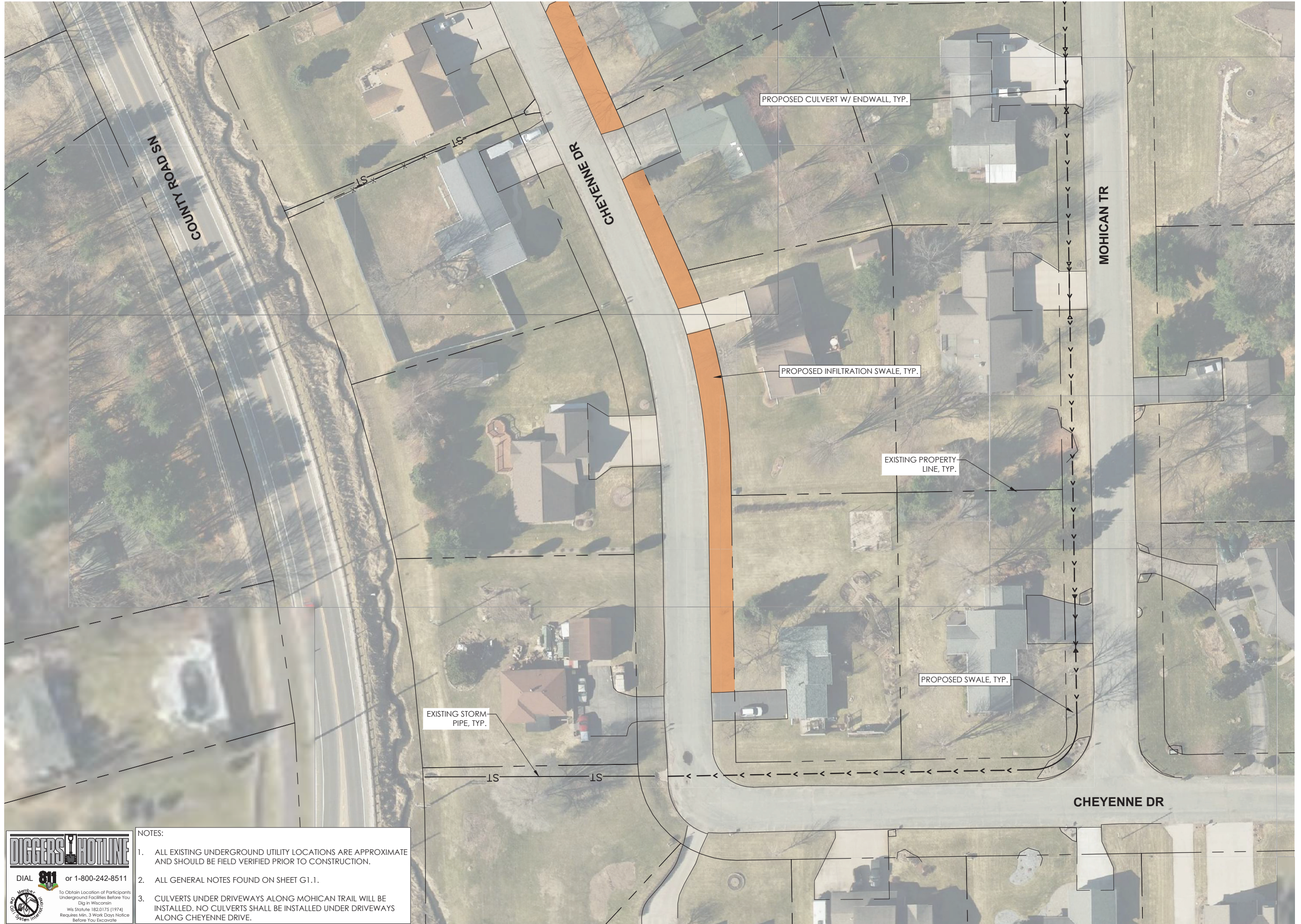
DIGGERS HOTLINE
DIAL **811** or 1-800-242-8511

To Obtain Location of Participants Underground Facilities Before You Dig in Wisconsin
Requires Min. 3 Work Days Notice Before You Excavate

REVISIONS	NO.	BY	DATE



DRAWN BY	JLM
REVIEWED BY	BRB
ISSUE DATE	MARCH 2023
GEC FILE NO.	2-0122-44G
SHEET NO.	C2.1



G:\Current Files L-Onalaska, Town of\2022 Municipal Engineering Services\2-0122-44G Cheyenne Drive - Thunderbird Hills Sub\2-0122-44 G12_CIVIL\Production Drawings\1-C2-0-PS-2-0122-44G-0.dwg, 3/1/2023 8:22:28 AM, 1:1

DIGGERS HOTLINE
 DIAL **811** or 1-800-242-8511
 To Obtain Location of Participants
 Underground Facilities Before You
 Dig in Wisconsin
 Wis. Statute 182.0175 (1974)
 Requires Min. 3 Work Days Notice
 Before You Excavate

- NOTES:
1. ALL EXISTING UNDERGROUND UTILITY LOCATIONS ARE APPROXIMATE AND SHOULD BE FIELD VERIFIED PRIOR TO CONSTRUCTION.
 2. ALL GENERAL NOTES FOUND ON SHEET G1.1.
 3. CULVERTS UNDER DRIVEWAYS ALONG MOHICAN TRAIL WILL BE INSTALLED. NO CULVERTS SHALL BE INSTALLED UNDER DRIVEWAYS ALONG CHEYENNE DRIVE.



General Engineering Company

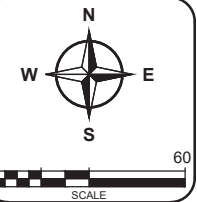
P.O. Box 340 • 916 Silver Lake Dr. • Portage, WI 53901
608-742-2169 (Office) • 608-742-2592 (Fax)
www.generalengineering.net

This document contains confidential or proprietary information of General Engineering Company. Neither this document nor the information herein is to be reproduced, distributed, used or disclosed either in whole or in part except as specifically authorized by General Engineering Company.

PROPOSED SITE PLAN
THUNDERBIRD HILLS SUBDIVISION
TOWN OF ONALASKA

TOWN OF ONALASKA
LACROSSE COUNTY, WI

REVISIONS	NO.	BY	DATE



DRAWN BY: JLM
 REVIEWED BY: BRB
 ISSUE DATE: MARCH 2023
 GEC FILE NO.: 2-0122-44G
 SHEET NO.:

C2.2

G:\Current Files L-Onalaska, Town of 2022 Municipal Engineering Services\2-0122-44G Cheyenne Drive - Thunderbird Hills Subd\CAD 2-0122-44 GIS_CIVIL\Production Drawings\1-C2.0-PSF-2-0122-44G-0.dwg, 3/1/2023 8:23:07 AM, 1:1



- NOTES:
1. ALL EXISTING UNDERGROUND UTILITY LOCATIONS ARE APPROXIMATE AND SHOULD BE FIELD VERIFIED PRIOR TO CONSTRUCTION.
 2. ALL GENERAL NOTES FOUND ON SHEET G1.1.

DIGGERS HOTLINE
 DIAL 811 or 1-800-242-8511

To Obtain Location of Participants Underground Facilities Before You Dig in Wisconsin
 Wis Statute 182.0175 (1974)
 Requires Min. 3 Work Days Notice Before You Excavate

www.generalengineering.net

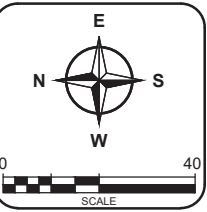


General Engineering Company
 P.O. Box 340 • 916 Silver Lake Dr. • Portage, WI 53901
 608-742-2169 (Office) • 608-742-2592 (Fax)
 www.generalengineering.net

This document contains confidential or proprietary information of General Engineering Company. Neither this document nor the information herein is to be reproduced, distributed, used or disclosed either in whole or in part except as specifically authorized by General Engineering Company.

PROPOSED SITE PLAN
THUNDERBIRD HILLS SUBDIVISION
TOWN OF ONALASKA
 TOWN OF ONALASKA
 LACROSSE COUNTY, WI

REVISIONS	NO.	BY	DATE



DRAWN BY	SEB
REVIEWED BY	LAL
ISSUE DATE	MARCH 2023
GEC FILE NO.	2-0122-44G
SHEET NO.	C2.3

G:\Current Files L-Onalaska, Town of\2022 Municipal Engineering Services\2-0122-44G Cheyenne Drive - Thunderbird Hills Subd\CAD 2-0122-44 G12_CIVIL\Production Drawings\1-C3.0-FGP-2-0122-44G-0.dwg, 3/1/2023 8:24:35 AM, 1:1



DIGGERS HOTLINE
 DIAL **811** or 1-800-242-8511
 To Obtain Location of Participants Underground Facilities Before You Dig in Wisconsin
 Wis Statute 182.0175 (1974) Requires Min. 3 Work Days Notice Before You Excavate



General Engineering Company

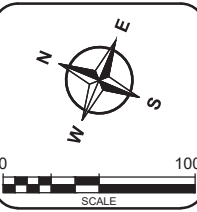
P.O. Box 340 • 916 Silver Lake Dr. • Portage, WI 53901
 608-742-2169 (Office) • 608-742-2592 (Fax)
 www.generalengineering.net

This document contains confidential or proprietary information of General Engineering Company. Neither this document nor the information herein is to be reproduced, distributed, used or disclosed either in whole or in part except as specifically authorized by General Engineering Company.

**PROPOSED GRADING PLAN
 THUNDERBIRD HILLS SUBDIVISION
 TOWN OF ONALASKA**

TOWN OF ONALASKA
 LACROSSE COUNTY, WI

REVISIONS	NO.	BY	DATE



DRAWN BY: JLM
 REVIEWED BY: LAL
 ISSUE DATE: MARCH 2023
 GEC FILE NO.: 2-0122-44G
 SHEET NO.:

C3.0



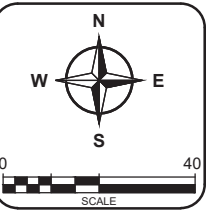
- NOTES:
1. ALL EXISTING UNDERGROUND UTILITY LOCATIONS ARE APPROXIMATE AND SHOULD BE FIELD VERIFIED PRIOR TO CONSTRUCTION.
 2. ALL GENERAL NOTES FOUND ON SHEET G1.1.
 3. EXISTING DRIVEWAYS TO BE RECONSTRUCTED IN-KIND.
 4. IMPROVED SURFACES SAW CUTTING IS NOT SHOWN ON THE PLAN. SAWCUTTING SHALL BE INCLUDED FOR ALL PAVEMENT REMOVAL.
 5. LENGTHS OF CULVERTS DO NOT INCLUDE ENDWALLS.

General Engineering Company
 P.O. Box 340 • 916 Silver Lake Dr. • Portage, WI 53901
 608-742-2169 (Office) • 608-742-2592 (Fax)
 www.generalengineering.net

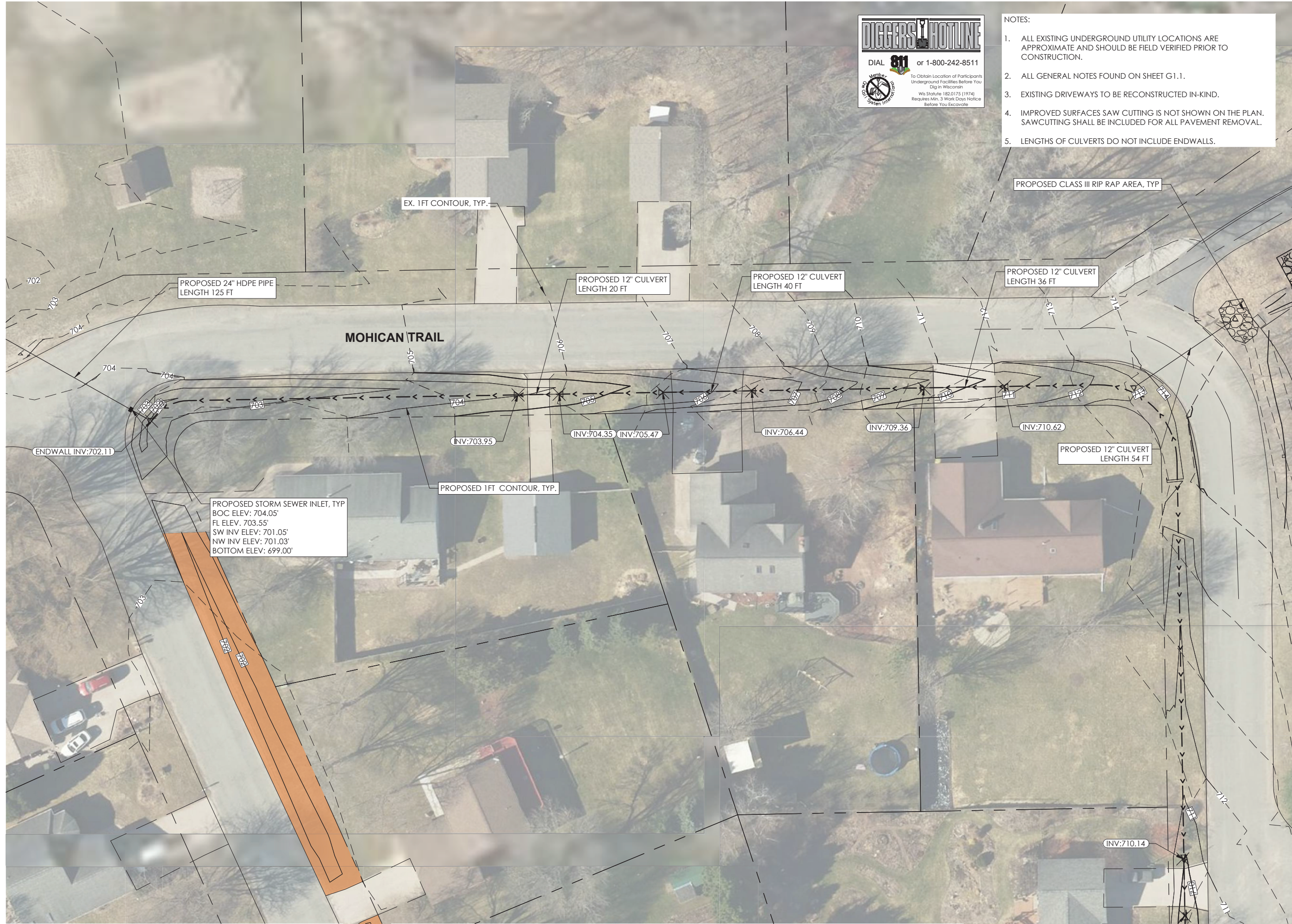
This document contains confidential or proprietary information of General Engineering Company. Neither this document nor the information herein is to be reproduced, distributed, used or disclosed either in whole or in part except as specifically authorized by General Engineering Company.

PROPOSED GRADING PLAN
THUNDERBIRD HILLS SUBDIVISION
TOWN OF ONALASKA
 TOWN OF ONALASKA
 LACROSSE COUNTY, WI

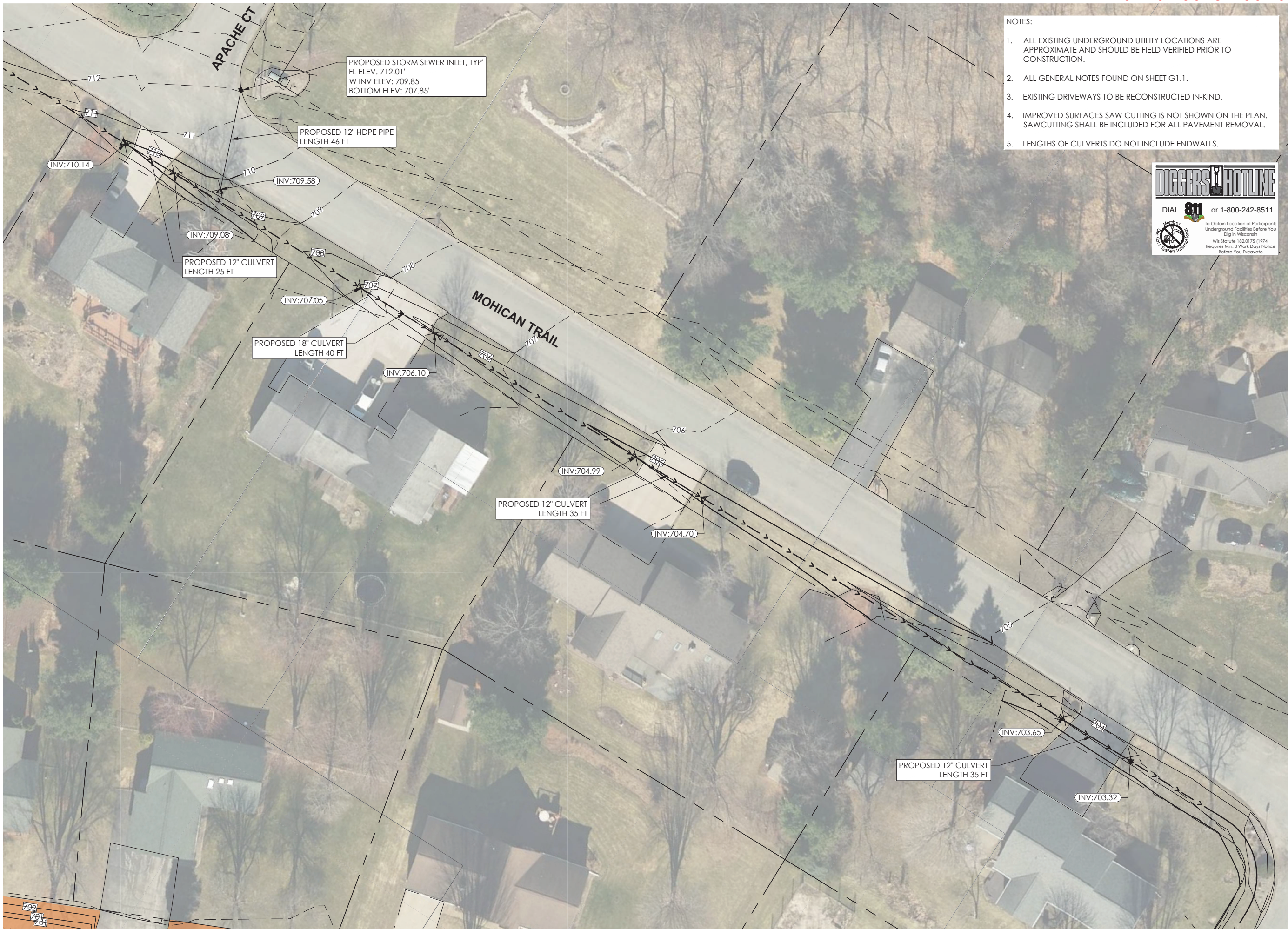
REVISIONS	NO.	BY	DATE



DRAWN BY	JLM
REVIEWED BY	LAL
ISSUE DATE	MARCH 2023
GEC FILE NO.	2-0122-44G
SHEET NO.	C3.1



G:\Current Files L-Onalaska, Town of 2022 Municipal Engineering Services\2-0122-44G Cheyenne Drive - Thunderbird Hills Subd\CAD 2-0122-44 G12_CIVIL\Production Drawings\1-C3.0-FGP-2-0122-44G-0.dwg, 3/1/2023 8:25:06 AM, 1:1



- NOTES:
1. ALL EXISTING UNDERGROUND UTILITY LOCATIONS ARE APPROXIMATE AND SHOULD BE FIELD VERIFIED PRIOR TO CONSTRUCTION.
 2. ALL GENERAL NOTES FOUND ON SHEET G1.1.
 3. EXISTING DRIVEWAYS TO BE RECONSTRUCTED IN-KIND.
 4. IMPROVED SURFACES SAW CUTTING IS NOT SHOWN ON THE PLAN. SAWCUTTING SHALL BE INCLUDED FOR ALL PAVEMENT REMOVAL.
 5. LENGTHS OF CULVERTS DO NOT INCLUDE ENDWALLS.

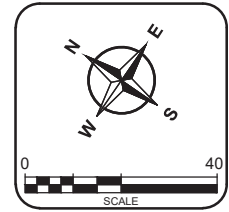
DIGGERS HOTLINE
 DIAL 811 or 1-800-242-8511
 To Obtain Location of Participants Underground Facilities Before You Dig in Wisconsin
 Wis Statute 182.0175 (1974) Requires Min. 3 Work Days Notice Before You Excavate



General Engineering Company
 P.O. Box 340 • 916 Silver Lake Dr. • Portage, WI 53901
 608-742-2169 (Office) • 608-742-2592 (Fax)
 www.generalengineering.net
This document contains confidential or proprietary information of General Engineering Company. Neither this document nor the information herein is to be reproduced, distributed, used or disclosed either in whole or in part except as specifically authorized by General Engineering Company.

**PROPOSED GRADING PLAN
 THUNDERBIRD HILLS SUBDIVISION
 TOWN OF ONALASKA
 LACROSSE COUNTY, WI**

REVISIONS	NO.	BY	DATE



DRAWN BY	JLM
REVIEWED BY	LAL
ISSUE DATE	MARCH 2023
GEC FILE NO.	2-0122-44G
SHEET NO.	C3.2

G:\Current Files L-Onalaska, Town of 2022 Municipal Engineering Services\2-0122-44G Cheyenne Drive - Thunderbird Hills Subd\CAD 2-0122-44 G12_CIVIL\Production Drawings\1-C3.0-FGP-2-0122-44G-0.dwg, 3/1/2023 8:25:35 AM, 1:1



General Engineering Company

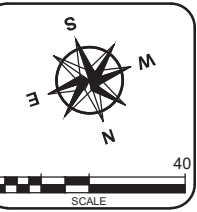
P.O. Box 340 • 916 Silver Lake Dr. • Portage, WI 53901
608-742-2169 (Office) • 608-742-2592 (Fax)
www.generalengineering.net

This document contains confidential or proprietary information of General Engineering Company. Neither this document nor the information herein is to be reproduced, distributed, used or disclosed either in whole or in part except as specifically authorized by General Engineering Company.

**PROPOSED GRADING PLAN
THUNDERBIRD HILLS SUBDIVISION
TOWN OF ONALASKA**

TOWN OF ONALASKA
LACROSSE COUNTY, WI

REVISIONS	NO.	BY	DATE



DRAWN BY	JLM
REVIEWED BY	LAL
ISSUE DATE	MARCH 2023
GEC FILE NO.	2-0122-44G
SHEET NO.	

C3.3



NOTES:

- 1. ALL EXISTING UNDERGROUND UTILITY LOCATIONS ARE APPROXIMATE AND SHOULD BE FIELD VERIFIED PRIOR TO CONSTRUCTION.
- 2. ALL GENERAL NOTES FOUND ON SHEET G1.1.

DIGGERS HOTLINE
 DIAL **811** or 1-800-242-8511
 To Obtain Location of Participants Underground Facilities Before You Dig in Wisconsin
 Wis. Statute 182.0175 (1)(7f)
 Requires Min. 3 Work Days Notice Before You Excavate



General Engineering Company

P.O. Box 340 • 916 Silver Lake Dr. • Portage, WI 53901
608-742-2169 (Office) • 608-742-2592 (Fax)

www.generalengineering.net
 This document contains confidential or proprietary information of General Engineering Company. Neither this document nor the information herein is to be reproduced, distributed, used or disclosed either in whole or in part except as specifically authorized by General Engineering Company.

**PROPOSED GRADING PLAN
 THUNDERBIRD HILLS SUBDIVISION
 TOWN OF ONALASKA**

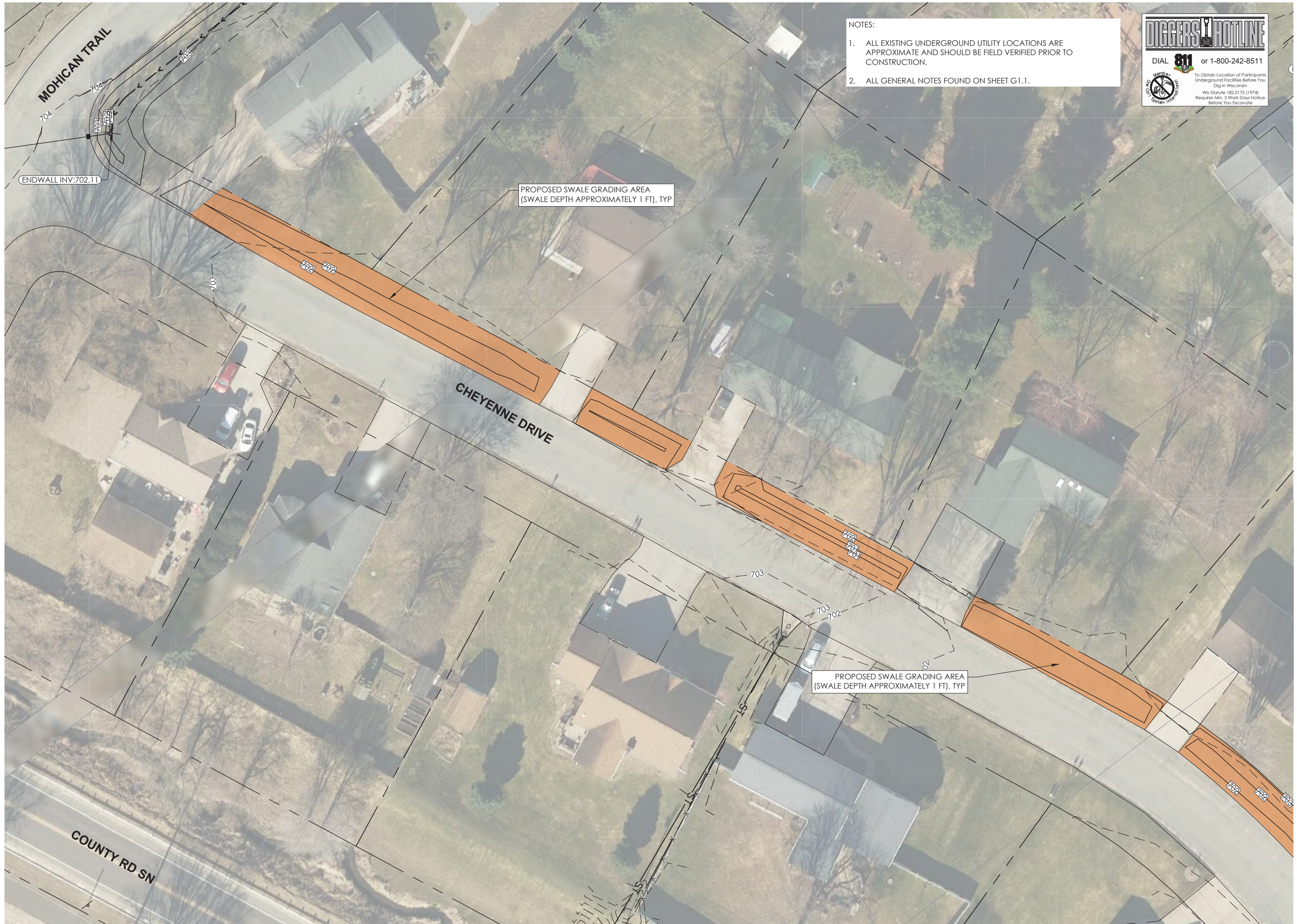
TOWN OF ONALASKA
 LACROSSE COUNTY, WI

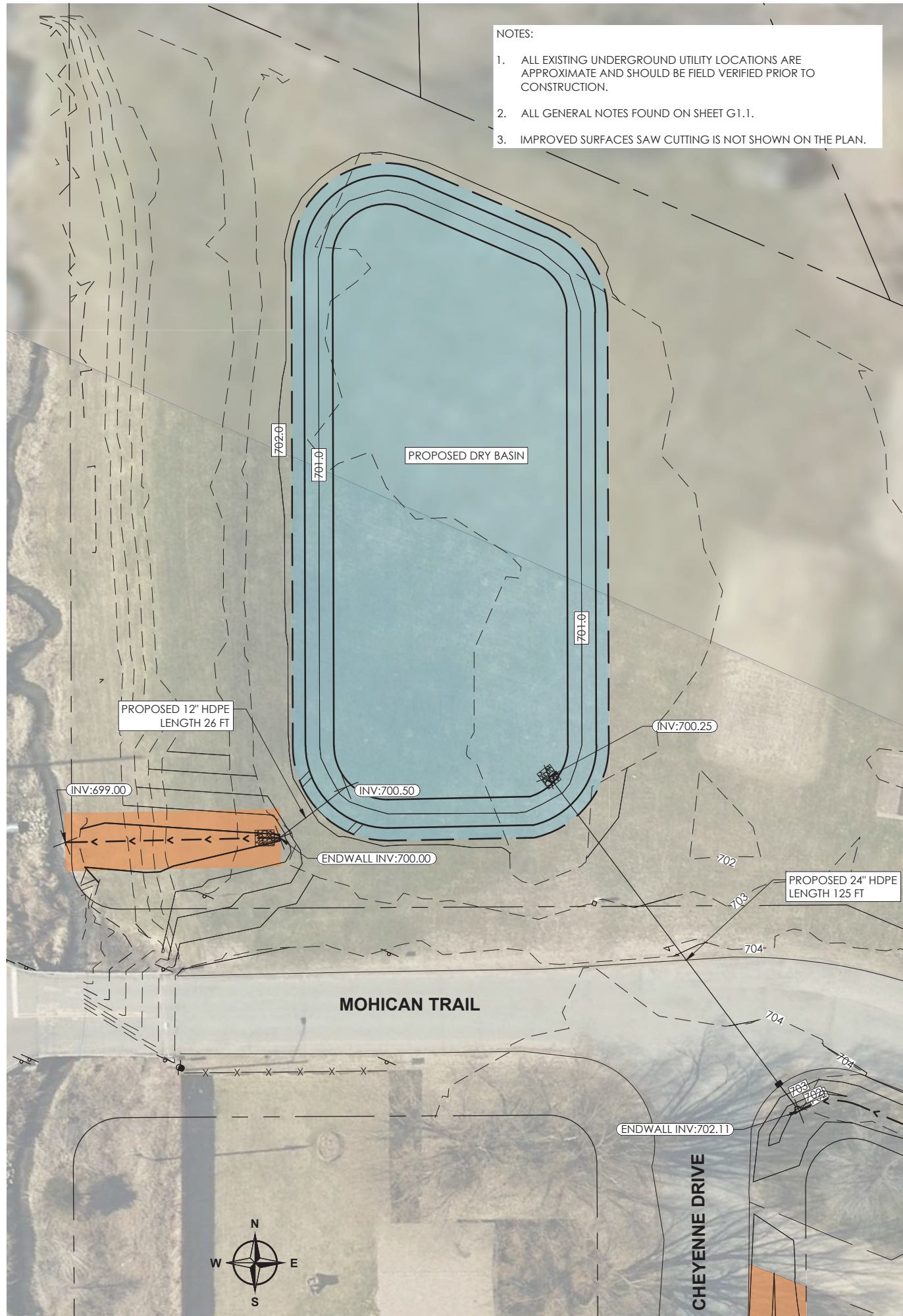
REVISIONS	NO.	BY	DATE



DRAWN BY: JLM
 REVIEWED BY: LAL
 ISSUE DATE: MARCH 2023
 GEC FILE NO.: 2-0122-44G
 SHEET NO.:

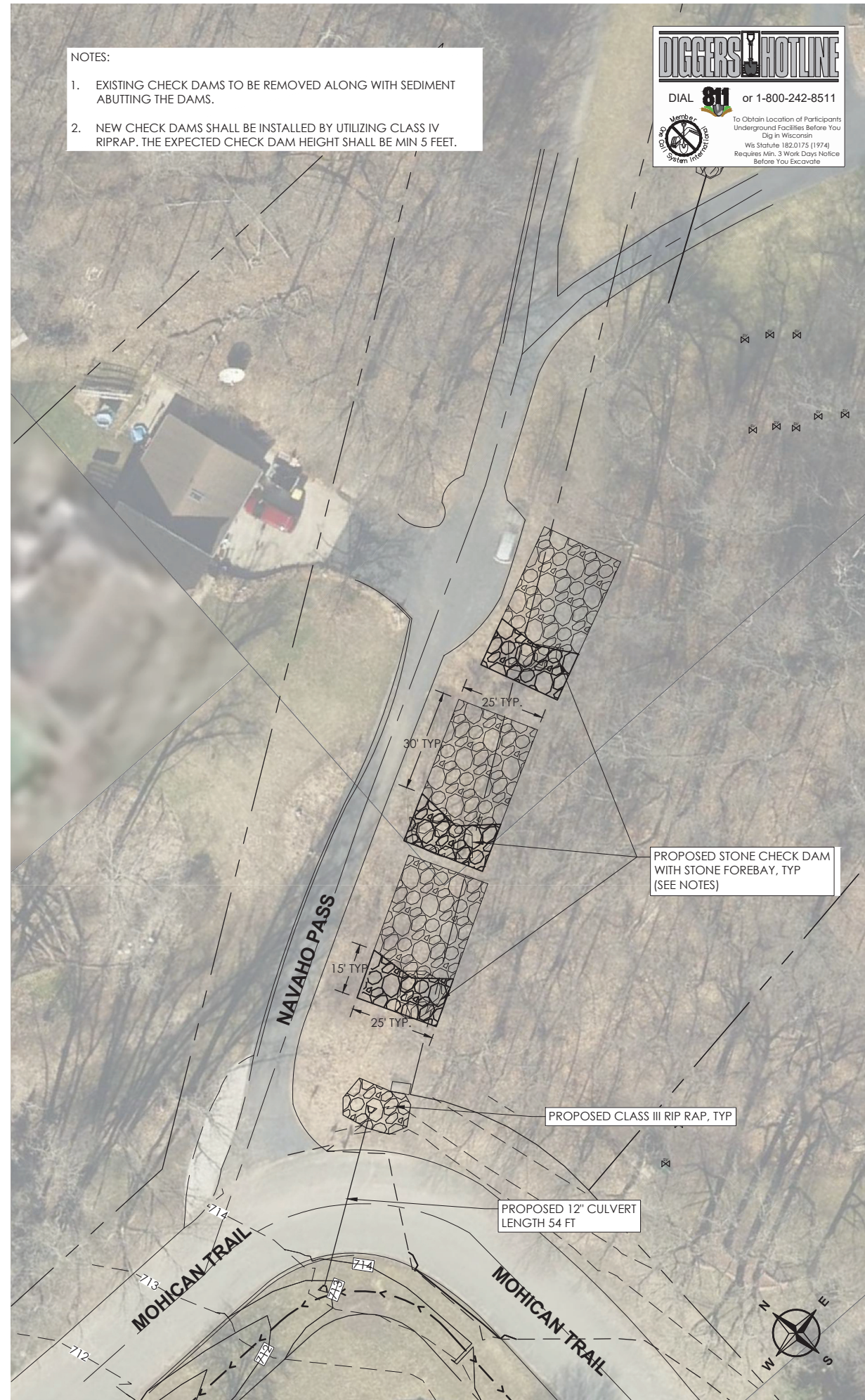
C3.4





- NOTES:
1. ALL EXISTING UNDERGROUND UTILITY LOCATIONS ARE APPROXIMATE AND SHOULD BE FIELD VERIFIED PRIOR TO CONSTRUCTION.
 2. ALL GENERAL NOTES FOUND ON SHEET G1.1.
 3. IMPROVED SURFACES SAW CUTTING IS NOT SHOWN ON THE PLAN.

PRELIMINARY NOT FOR CONSTRUCTION



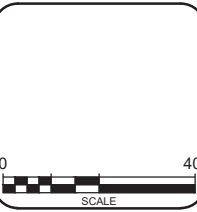
- NOTES:
1. EXISTING CHECK DAMS TO BE REMOVED ALONG WITH SEDIMENT ABUTTING THE DAMS.
 2. NEW CHECK DAMS SHALL BE INSTALLED BY UTILIZING CLASS IV RIPRAP. THE EXPECTED CHECK DAM HEIGHT SHALL BE MIN 5 FEET.

DIGGERS HOTLINE
 DIAL **811** or 1-800-242-8511
 To Obtain Location of Participants Underground Facilities Before You Dig in Wisconsin
 Wis Statute 182.0175 (1974)
 Requires Min. 3 Work Days Notice Before You Excavate

GEC
General Engineering Company
 P.O. Box 340 • 916 Silver Lake Dr. • Portage, WI 53901
 608-742-2169 (Office) • 608-742-2592 (Fax)
 www.generalengineering.net
This document contains confidential or proprietary information of General Engineering Company. Neither this document nor the information herein is to be reproduced, distributed, used or disclosed either in whole or in part except as specifically authorized by General Engineering Company.

PROPOSED GRADING PLAN
THUNDERBIRD HILLS SUBDIVISION
TOWN OF ONALASKA
 TOWN OF ONALASKA
 LACROSSE COUNTY, WI

REVISIONS	NO.	BY	DATE



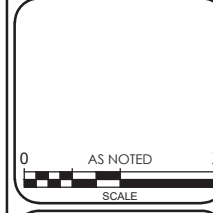
DRAWN BY: JLM
 REVIEWED BY: LAL
 ISSUE DATE: MARCH 2023
 GEC FILE NO.: 2-0122-44G
 SHEET NO.: **C3.5**



General Engineering Company
 P.O. Box 340 • 916 Silver Lake Dr. • Portage, WI 53901
 608-742-2188 (Office) • 608-742-2692 (Fax)
 www.generalengineering.net
This document contains confidential or proprietary information of General Engineering Company. No part of this document may be reproduced or transmitted in any form or by any means, electronic or mechanical, including photocopying and recording, or by any information storage or retrieval system, without the prior written permission of General Engineering Company.

STORM SEWER CONST. DETAILS
THUNDERBIRD HILLS SUBDIVISION
TOWN OF ONALASKA
 TOWN OF ONALASKA
 LACROSSE COUNTY, WI

NO.	DATE	BY



DRAWN BY JLM
 REVIEWED BY LAL
 ISSUE DATE MARCH 2023
 GEC FILE NO. 2-0122-44G
 SHEET NO.

**FLEXIBLE PIPE BEDDING
(CORRUGATED STEEL AND POLYETHYLENE)**

COVER MATERIAL
 SPRING LINE
 BEDDING
 HAUNCHING
 PIPE DIA + 24" MIN
 12" MIN
 4"-6"
 PIPE OD

3" CRUSHED STONE REQUIRED IN WET TRENCH @ NO EXTRA COST TO OWNER

BEDDING AND COVER MATERIAL:

CLASS IA: CRUSHED STONE OR GRAVEL CONFORMING TO FOLLOWING GRADATION:

SIEVE SIZE	% PASSING BY WEIGHT
1"	100
3/4"	90-100
3/8"	20-55
NO. 4	0-10
NO. 8	0-5

CLASS IB: CRUSHED STONE OR GRAVEL CONFORMING TO FOLLOWING GRADATION:

SEIVE SIZE	% PASSING BY WEIGHT
1/2"	100
3/8"	85-100
NO. 4	10-30
NO. 8	0-5

INSTALLATION:
 PLACE AND COMPACT BEDDING MATERIAL AND COVER IN MAXIMUM 6" LAYERS. WORK MATERIAL IN AND AROUND PIPE BY HAND TO PROVIDE UNIFORM SUPPORT. COMPACT CLASS IB WITH HAND TAMPER OR VIBRATORY COMPACTOR TO 85% STANDARD PROCTOR.

RIGID PIPE BEDDING (RCP)

UNDISTURBED MATERIAL
 COVER MATERIAL
 SPRING LINE
 BEDDING
 HAUNCHING
 PIPE DIA + 12" MIN
 6" MIN
 OD/8
 4" MIN
 PIPE OD

3" CRUSHED STONE REQUIRED IN WET TRENCH @ NO EXTRA COST TO OWNER

BEDDING AND COVER MATERIAL:

CLASS IA: CLEAN, ANGULAR CRUSHED STONE, CRUSHED ROCK, OR CRUSHED GRAVEL CONFORMING TO THE FOLLOWING GRADATION:

SIEVE SIZE	% PASSING BY WEIGHT
1"	100
3/4"	90-100
3/8"	20-55
NO. 4	0-10
NO. 8	0-5

CLASS IB: CLEAN, ANGULAR CRUSHED STONE, CRUSHED ROCK, OR CRUSHED GRAVEL CONFORMING TO THE FOLLOWING GRADATION:

SIEVE SIZE	% PASSING BY WEIGHT
1/2"	100
3/8"	85-100
NO. 4	10-30
NO. 200	0-5

CLASS II: CLEAN COARSE-GRAINED SOILS CLASSIFIED IN ASTM D2487 AS GW, GP, SW, SP.
CLASS III: COARSE-GRAINED SOILS WITH FINES CLASSIFIED IN ASTM D2487 AS GM, GC, SM, SC.

INSTALLATION:
 PLACE 4" OF BEDDING MATERIAL BENEATH PIPE. PLACE BEDDING MATERIAL AROUND THE PIPE TO THE SPRING LINE. WORK THE MATERIAL IN AND AROUND THE PIPE BY HAND TO PROVIDE UNIFORM SUPPORT. PLACE COVER MATERIAL CAREFULLY TO A LEVEL 6" ABOVE THE PIPE.

RECOMMENDED GRATE SIZING (RCP)*

ENDWALL SIZE	BAR DIAMETER	ANCHOR DIAMETER	H HEIGHT
12"	3/4"	5/8"	2 1/2"
15"	3/4"	5/8"	3"
18"	3/4"	5/8"	4"
21"	1"	5/8"	4"
24"	1"	5/8"	4"
27"	1"	5/8"	5"
30"	1"	5/8"	5"
36"	1"	5/8"	5"
42"	1"	5/8"	6"
48"	1 1/4"	5/8"	6"
54"	1 1/4"	5/8"	6"
60"	1 1/4"	5/8"	7"
66"	1 1/4"	5/8"	7"
72"	1 1/4"	5/8"	7"
84"	1 1/4"	5/8"	8"

* SIZES MAY VARY PER MANUFACTURER

NOTES:

- 6" SPACING MAX.
- HINGED CONNECTOR PLATE w/ ANCHOR ATTACHED AT THREE POINTS TO ENDWALL.

RCP

CMP/HDPE

1/2" DIA. BOLTS
 10 GAUGE STRAPS
 6" CENTER

NOTE:
 1. HDPE OR PVC PIPE SHALL UTILIZE CMP ENDWALLS.

**TYPICAL END-SECTION GRATE
(PROVIDE GRATES ON ALL END-SECTIONS FOR PIPES LARGER THAN 12" DIA.)**

TYPICAL SWALE CROSS SECTION

PROPOSED ROADSIDE SWALE
 2FT
 MATCH TO EXISTING GROUND, TYP.
 PROPOSED GREEN SHOULDER
 PROPOSED GROUND, TYP.
 6:1 MAX SLOPE
 NATIVE SOILS

DRY POND CROSS SECTION

EXISTING GROUND, TYP.
 PROPOSED GROUND, TYP.
 BOTTOM POND ELEV: 700.25'
 6:1 TYP.
 NATIVE SOILS
 MINIMUM 6" TOPSOIL
 TOP OF BERM ELEV: 701.75'

RIP RAP AT PIPE DISCHARGE

START RIP RAP AT MID-POINT OF END-SECTION
 OR AS NOTED ON PLANS
 RIP RAP
 W + 4' OR AS NOTED ON PLANS
 D, PIPE DIAMETER
 W, END SECTION WIDTH

PLAN VIEW

SECTION A-A

FLOWLINE
 6" MIN.-12" MAX.
 GEOTEXTILE
 RIP RAP
 d, DEPTH OF RIP-RIP

RCP PIPE

RIP RAP CLASS	WIS DOT RIP RAP EQUIVALENT	d, DEPTH
1	-	9"
2	LIGHT	18"
3	HEAVY	27"
4	EXTRA HEAVY	36"

START RIP RAP AT END-SECTION
 OR AS NOTED ON PLANS
 RIP RAP
 W + 4' OR AS NOTED ON PLANS
 D, PIPE DIAMETER
 W, END SECTION WIDTH

PLAN VIEW

SECTION A-A

FLOWLINE
 6" MIN.-12" MAX.
 GEOTEXTILE
 RIP RAP
 d, DEPTH OF RIP-RIP

CMP/HDPE PIPE

G:\Current Files L\Onalaska, Town of\2022 Municipal Engineering Services\2-0122-44G Cheyenne Drive - Thunderbird Hills Sub\2-0122-44 GEC_CIVIL\Production Drawings\1-C4.0-SSCT-2-0122-44G-0.dwg, 3/1/2023 8:27:51 AM, 1:1



General Engineering Company

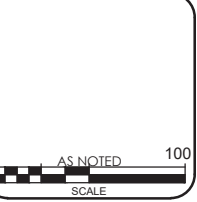
P.O. Box 340 • 916 Silver Lake Dr. • Portage, WI 53901
608-742-2169 (Office) • 608-742-2592 (Fax)
www.generalengineering.net

This document contains confidential information for proprietary information of General Engineering Company. Neither this document nor the information herein is to be reproduced, distributed, used or disclosed either in whole or in part except as specifically authorized by General Engineering Company.

STORM SEWER MANHOLE & INLETS
THUNDERBIRD HILLS SUBDIVISION
TOWN OF ONALASKA

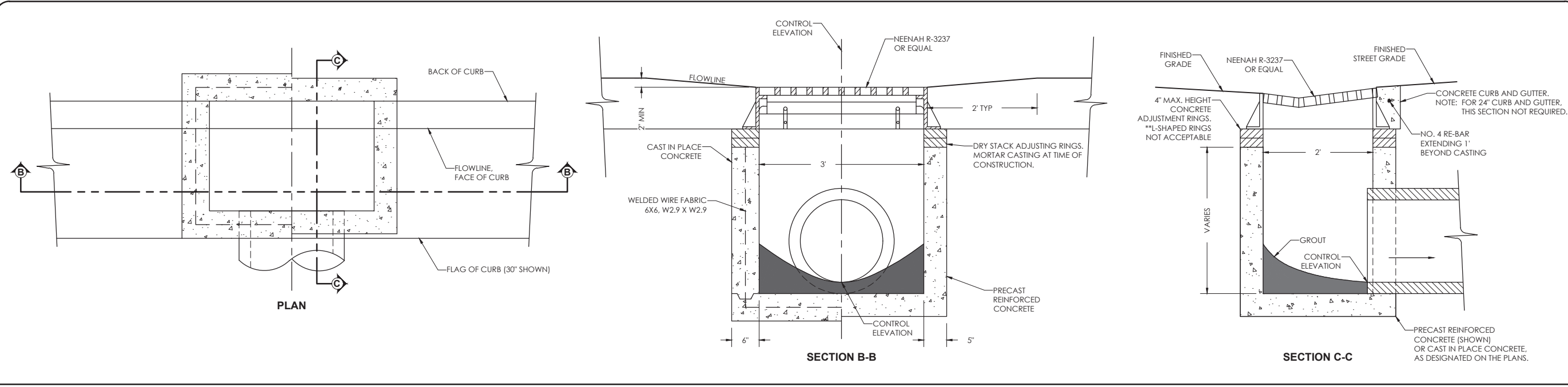
TOWN OF ONALASKA
LACROSSE COUNTY, WI

REVISIONS	NO.	BY	DATE

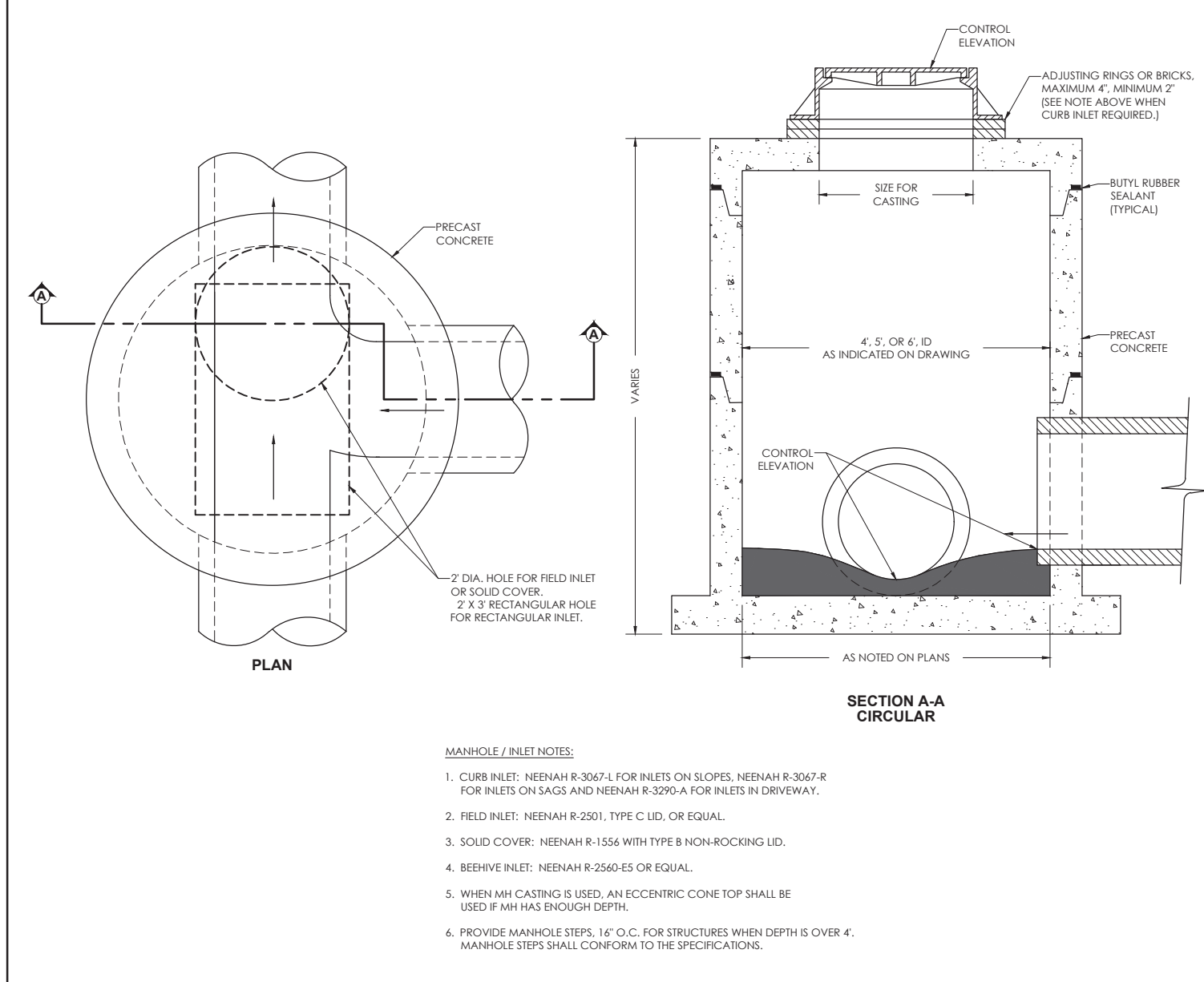
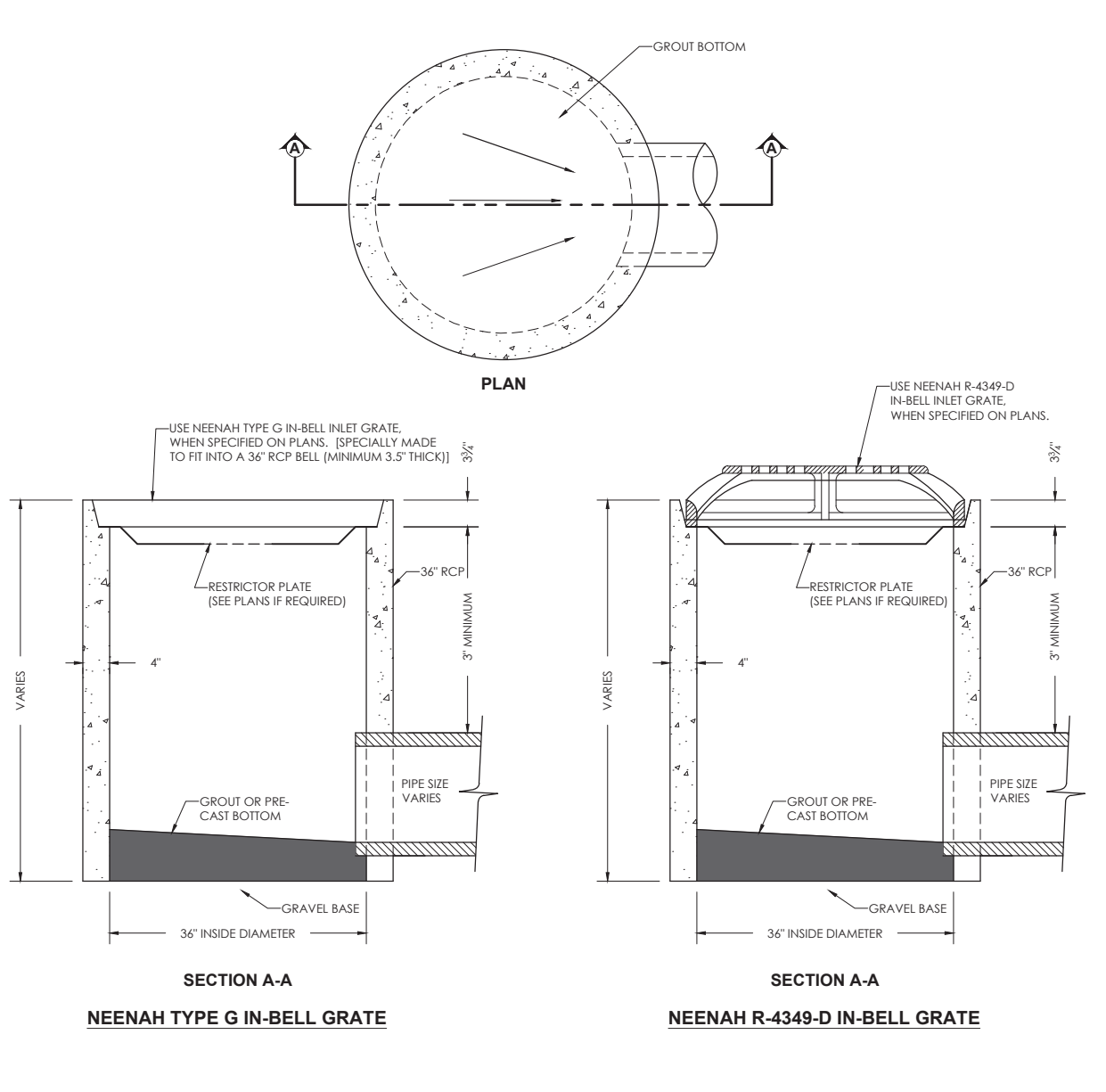


DRAWN BY: JLM
REVIEWED BY: LAL
ISSUE DATE: MARCH 2023
GEC FILE NO.: 2-0122-44G
SHEET NO.

C5.0



2'x3' CURB INLET



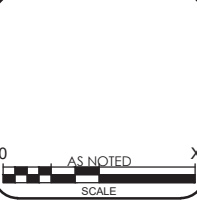
- MANHOLE / INLET NOTES:
1. CURB INLET: NEENAH R-3067-L FOR INLETS ON SLOPES, NEENAH R-3067-R FOR INLETS ON SAGS AND NEENAH R-3290-A FOR INLETS IN DRIVEWAY.
 2. FIELD INLET: NEENAH R-2501, TYPE C LID, OR EQUAL.
 3. SOLID COVER: NEENAH R-1556 WITH TYPE B NON-ROCKING LID.
 4. BEEHIVE INLET: NEENAH R-2560-E5 OR EQUAL.
 5. WHEN MH CASTING IS USED, AN ECCENTRIC CONE TOP SHALL BE USED IF MH HAS ENOUGH DEPTH.
 6. PROVIDE MANHOLE STEPS, 16\"/>



General Engineering Company
 P.O. Box 340 • 916 Silver Lake Dr. • Portage, WI 53901
 608-742-2169 (Office) • 608-742-2592 (Fax)
 www.generalengineering.net

EROSION CONTROL DETAILS
THUNDERBIRD HILLS SUBDIVISION
TOWN OF ONALASKA
 TOWN OF ONALASKA
 LA CROSSE COUNTY, WI

NO.	DATE	BY



DRAWN BY JLM
 REVIEWED BY LAL
 ISSUE DATE MARCH 2023
 GEC FILE NO. 2-0122-44G
 SHEET NO.

C6.0

INSTALLATION NOTES:

TYPE B & C

- TRIM EXCESS FABRIC IN THE FLOW LINE TO WITHIN 3" OF THE GRATE.
- THE CONTRACTOR SHALL DEMONSTRATE A METHOD OF MAINTENANCE, USING A SEWN FLAP, HAND HOLDS OR OTHER METHOD TO PREVENT ACCUMULATED SEDIMENT FROM ENTERING THE INLET.

TYPE D

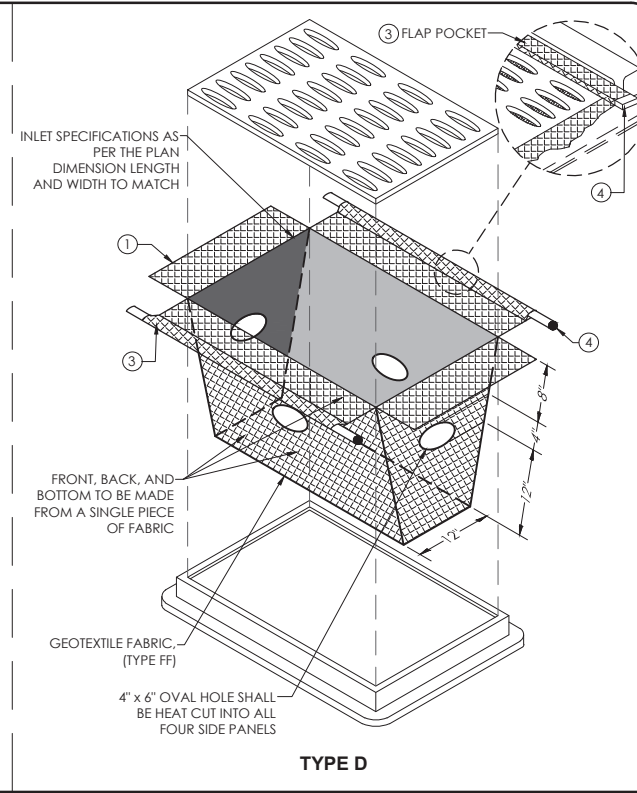
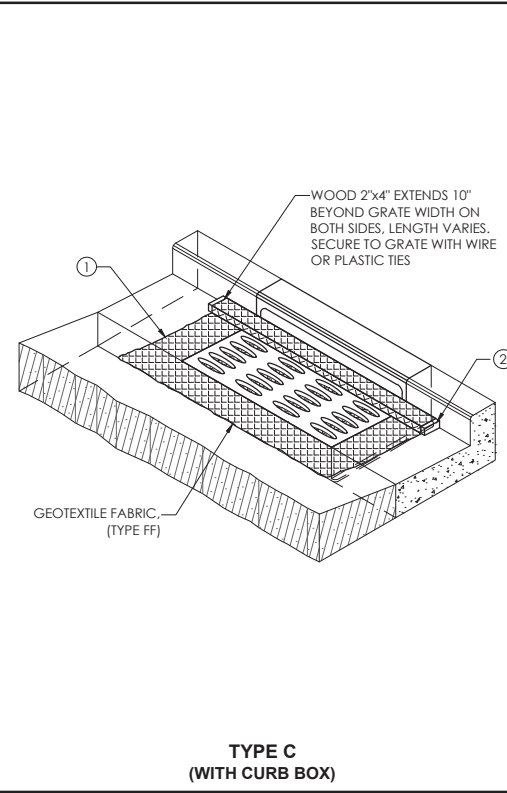
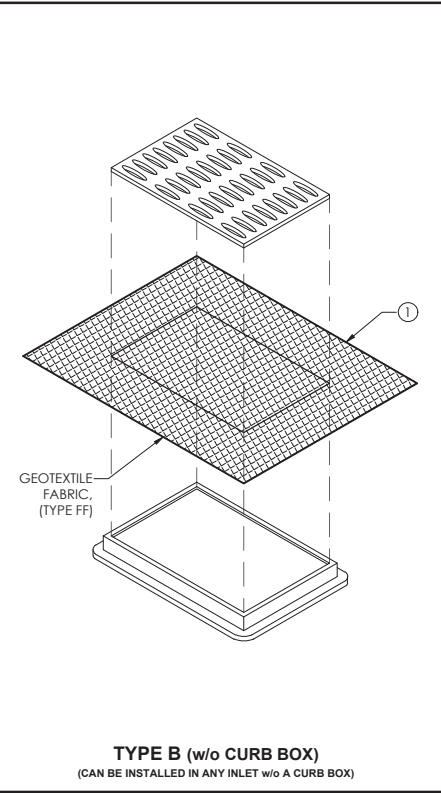
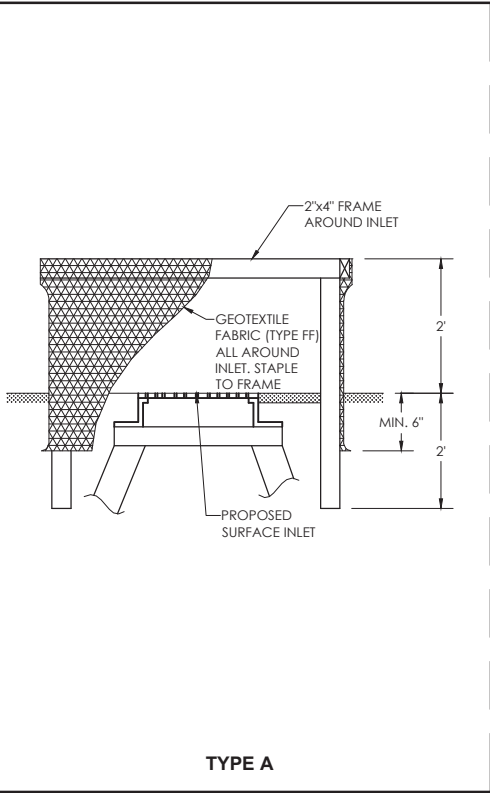
- DO NOT INSTALL INLET PROTECTION TYPE D IN INLETS SHALLOWER THAN 30", MEASURED FROM THE BOTTOM OF THE INLET TO THE TOP OF THE GRATE.
- THE INSTALLED BAG SHALL HAVE A MINIMUM SIDE CLEARANCE, BETWEEN THE INLET WALLS AND THE BAG, MEASURED AT THE BOTTOM OF THE OVERFLOW HOLES, OF 3". WHERE NECESSARY THE CONTRACTOR SHALL CINCH THE BAG, USING PLASTIC ZIP TIES, TO ACHIEVE THE 3" CLEARANCE. THE TIES SHALL BE PLACED AT A MAXIMUM OF 4" FROM THE BOTTOM OF THE BAG.

GENERAL NOTES:

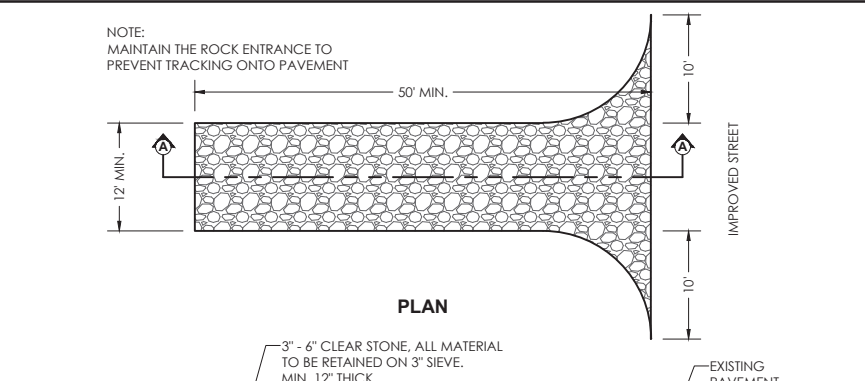
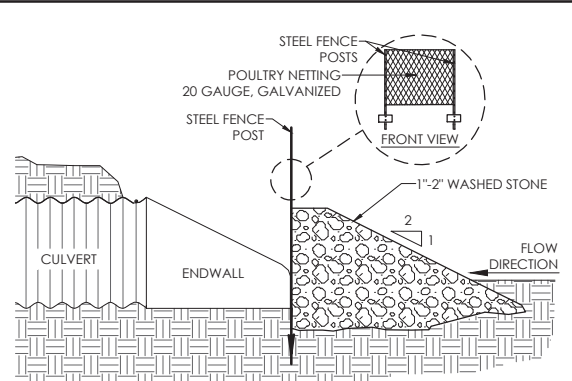
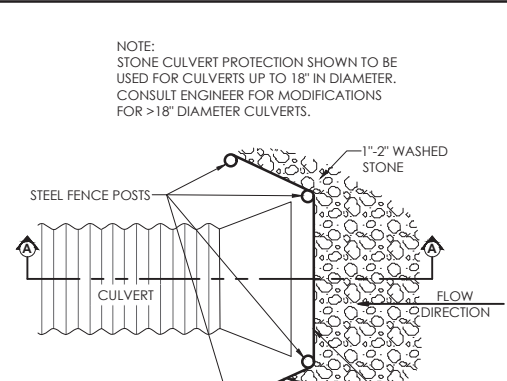
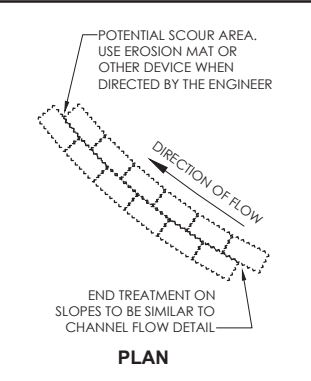
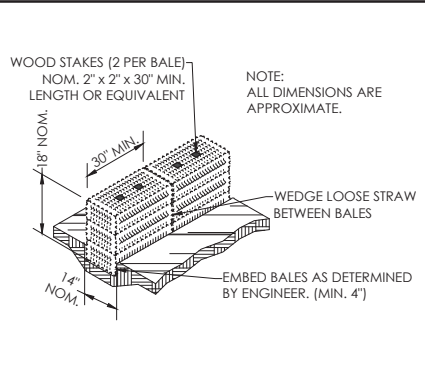
MANUFACTURED ALTERNATIVES APPROVED AND LISTED ON WIS DOT PRODUCT ACCEPTABILITY LIST MAY BE SUBSTITUTED.

WHEN REMOVING OR MAINTAINING INLET PROTECTION, CARE SHALL BE TAKEN SO THAT THE SEDIMENT TRAPPED ON THE GEOTEXTILE FABRIC DOES NOT FALL INTO THE INLET. ANY MATERIAL FALLING INTO THE INLET SHALL BE REMOVED IMMEDIATELY.

- FINISHED SIZE, INCLUDING FLAP POCKETS WHERE REQUIRED SHALL EXTEND A MINIMUM OF 10" AROUND THE PERIMETER TO FACILITATE MAINTENANCE OR REMOVAL.
- FOR INLET PROTECTION, TYPE C (WITH CURB BOX), AN ADDITIONAL 18" OF FABRIC IS WRAPPED AROUND THE WOOD AND SECURED WITH STAPLES. THE WOOD SHALL NOT BLOCK THE ENTIRE HEIGHT OF THE CURB BOX OPENING.
- FLAP POCKET SHALL BE LARGE ENOUGH TO ACCEPT A WOOD 2" x 4".
- USE REBAR OR STEEL ROD FOR REMOVAL OR FOR INLETS WITH CURB CASTING; USE A WOOD 2"x4" EXTENDED 10" BEYOND SIDES OF GRATE. CONNECT 2"x4" TO GRATE WITH WIRE OR PLASTIC TIES.



INLET PROTECTION

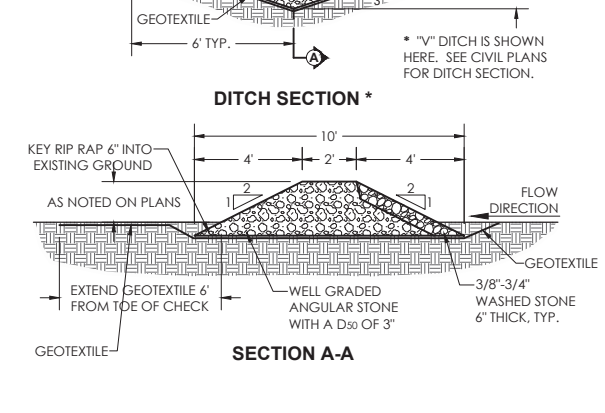
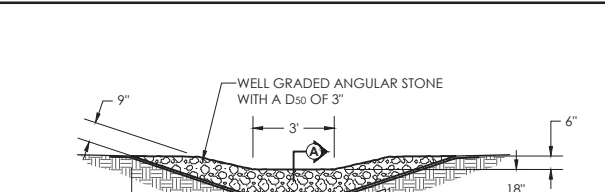
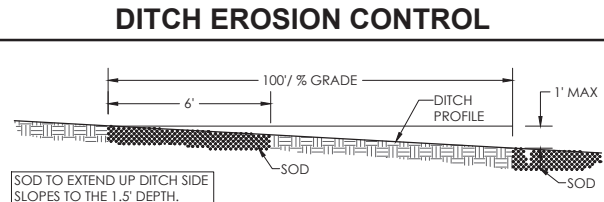
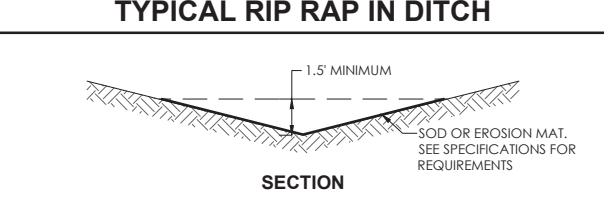
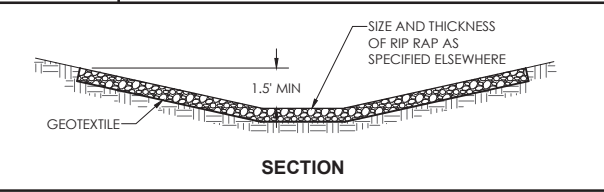
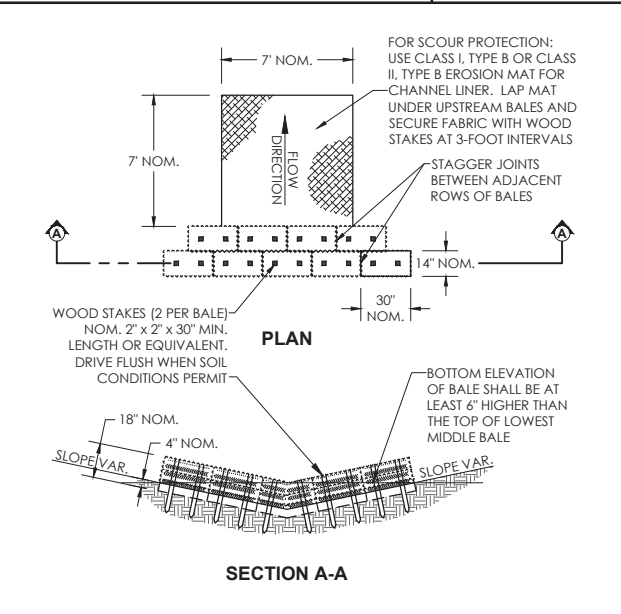


EROSION BALE INSTALLATION

EROSION BALE FOR ALTERING FLOW DIRECTION

STONE CULVERT PROTECTION

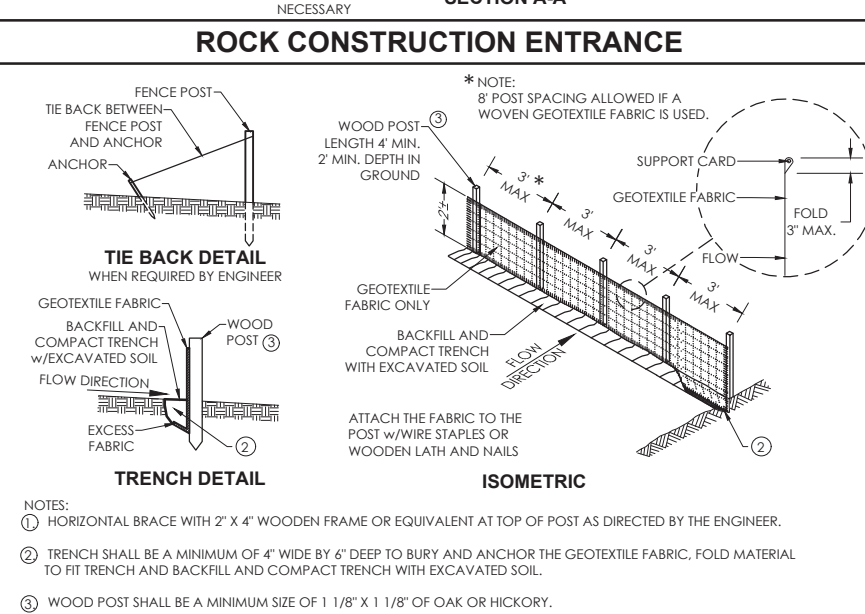
ROCK CONSTRUCTION ENTRANCE



EROSION BALE FOR CHANNEL FLOW

SOD DITCH CHECKS

STONE DITCH CHECK



SILT FENCE

G:\Current Files L\Onalaska, Town of\2022 Municipal Engineering Services\2-0122-44G Cheyenne Drive - Thunderbird Hills Sub\2-0122-44 G12_CIVIL\Production Drawings\1-C6.0-ECDT-2-0122-44G-0.dwg, 3/1/2023 8:29:54 AM, 1:1