

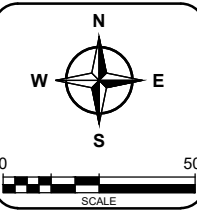
DIGGERS HOTLINE
 DIAL **811** or 1-800-242-8511
 To Obtain Location of Participants
 Underground Facilities Before You
 Dig in Wisconsin
 Wis Statute 182.0175 (1974)
 Requires Min. 3 Work Days Notice
 Before You Excavate



General Engineering Company
 P.O. Box 340 • 916 Silver Lake Dr. • Portage, WI 53901
 608-742-2169 (Office) • 608-742-2592 (Fax)
 www.generalengineering.net
This document contains confidential or proprietary information of General Engineering Company. Neither this document nor the information herein is to be reproduced, distributed, used or disclosed either in whole or in part except as specifically authorized by General Engineering Company.

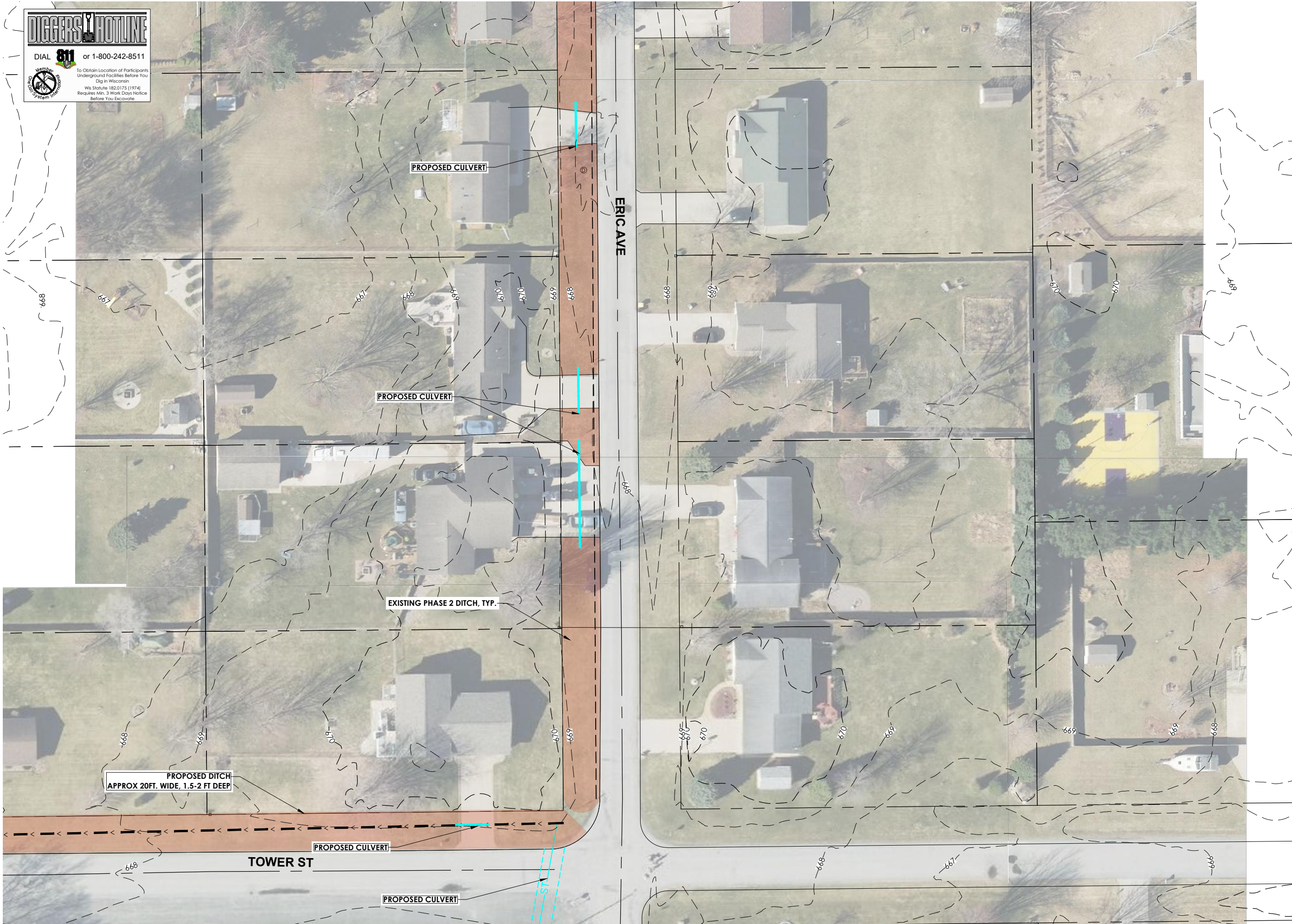
PROPOSED SITE PLAN
ERIC AVE STORM WATER PLAN - PHASE 3
TOWN OF ONALASKA
 TOWN OF ONALASKA
 LACROSSE COUNTY, WI

REVISIONS	NO.	BY	DATE



DRAWN BY: SEB
 REVIEWED BY: LAL
 ISSUE DATE: APRIL 2023
 GEC FILE NO.: 2-0119-44E
 SHEET NO.: **C2.0**

G:\Current Files L-Onalaska, Town of\2023 Municipal Engineering Services\2-0123-44C Eric Ave Phase 3\CAD\2-0123-44C2_CIVIL\Production Drawings\1-C2-0-PSP-2-0119-44E-0.dwg, 3/14/2023 4:35:01 PM, 1:1



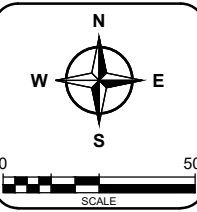
DIGGERS HOTLINE
 DIAL **811** or 1-800-242-8511
 To Obtain Location of Participants
 Underground Facilities Before You
 Dig in Wisconsin
 Wis Statute 182.0175 (1974)
 Requires Min. 3 Work Days Notice
 Before You Excavate



General Engineering Company
 P.O. Box 340 • 916 Silver Lake Dr. • Portage, WI 53901
 608-742-2169 (Office) • 608-742-2592 (Fax)
 www.generalengineering.net
This document contains confidential or proprietary information of General Engineering Company. Neither this document nor the information herein is to be reproduced, distributed, used or disclosed either in whole or in part except as specifically authorized by General Engineering Company.

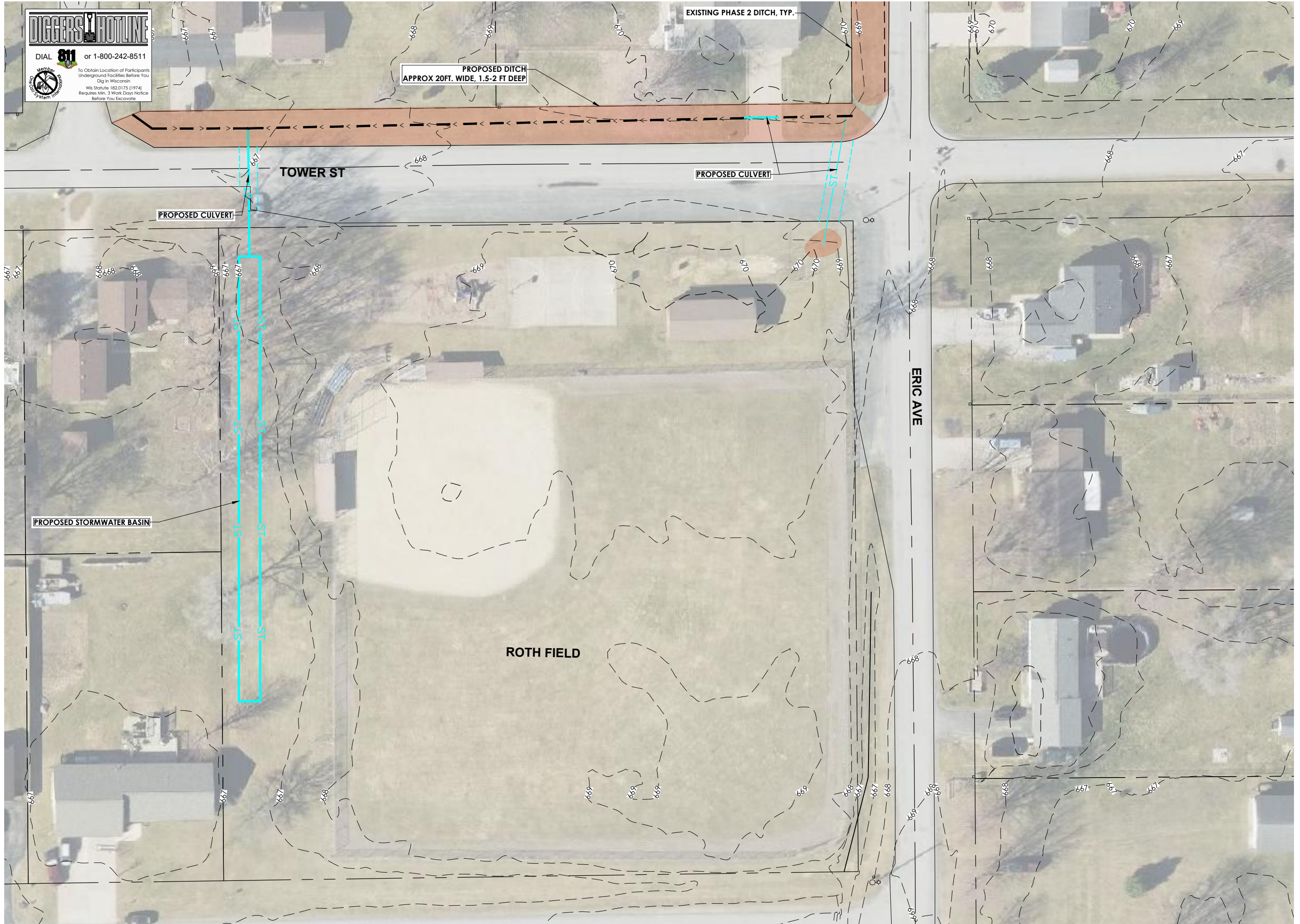
PROPOSED SITE PLAN
ERIC AVE STORM WATER PLAN - PHASE 3
TOWN OF ONALASKA
 TOWN OF ONALASKA
 LACROSSE COUNTY, WI

REVISIONS	NO.	BY	DATE



DRAWN BY: SEB
 REVIEWED BY: LAL
 ISSUE DATE: APRIL 2023
 GEC FILE NO.: 2-0119-44E
 SHEET NO.

C2.1



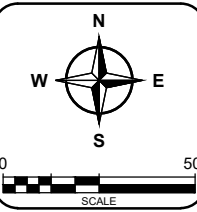
DIGGERS HOTLINE
 DIAL **811** or 1-800-242-8511
 To Obtain Location of Participants
 Underground Facilities Before You
 Dig in Wisconsin
 Wis Statute 182.0175 (1974)
 Requires Min. 3 Work Days Notice
 Before You Excavate



General Engineering Company
 P.O. Box 340 • 916 Silver Lake Dr. • Portage, WI 53901
 608-742-2169 (Office) • 608-742-2592 (Fax)
 www.generalengineering.net
This document contains confidential or proprietary information of General Engineering Company. Neither this document nor the information herein is to be reproduced, distributed, used or disclosed either in whole or in part except as specifically authorized by General Engineering Company.

PROPOSED SITE PLAN
ERIC AVE STORM WATER PLAN - PHASE 3
TOWN OF ONALASKA
 TOWN OF ONALASKA
 LACROSSE COUNTY, WI

REVISIONS	NO.	BY	DATE



DRAWN BY: SEB
 REVIEWED BY: LAL
 ISSUE DATE: APRIL 2023
 GEC FILE NO.: 2-0119-44E
 SHEET NO.