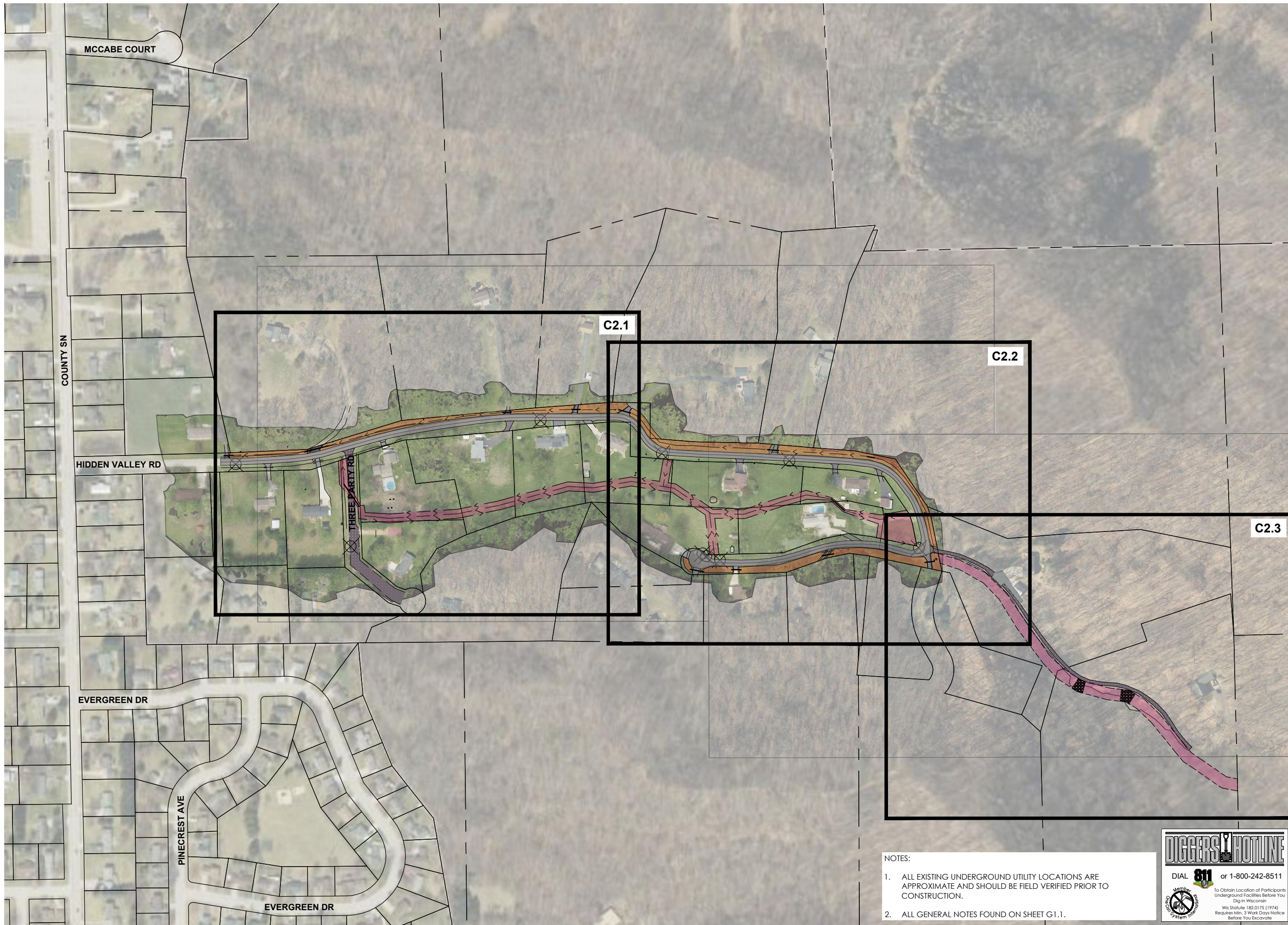


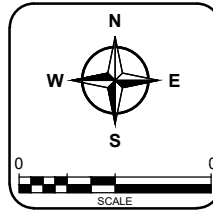
G:\Current Files L\Onalaska, Town of\2023 Municipal Engineering Services\2-0123-44F Hidden Valley Drainage 2023\CAD 2-0123-44F\2_CIVIL\Production Drawings\1-C2.0_PSP_2-0123-44F-0.dwg, 7/26/2023 11:24:52 AM, 1:1



General Engineering Company
 P.O. Box 340 • 916 Silver Lake Dr. • Portage, WI 53901
 608-742-2169 (Office) • 608-742-2592 (Fax)
 www.generalengineering.net
This document contains confidential or proprietary information of General Engineering Company. Neither this document nor the information herein is to be reproduced, distributed, used or disclosed either in whole or in part except as specifically authorized by General Engineering Company.

**PROPOSED SITE PLAN
 HIDDEN VALLEY DRAINAGE
 TOWN OF ONALASKA
 LA CROSSE COUNTY**

REVISIONS	NO.	BY	DATE

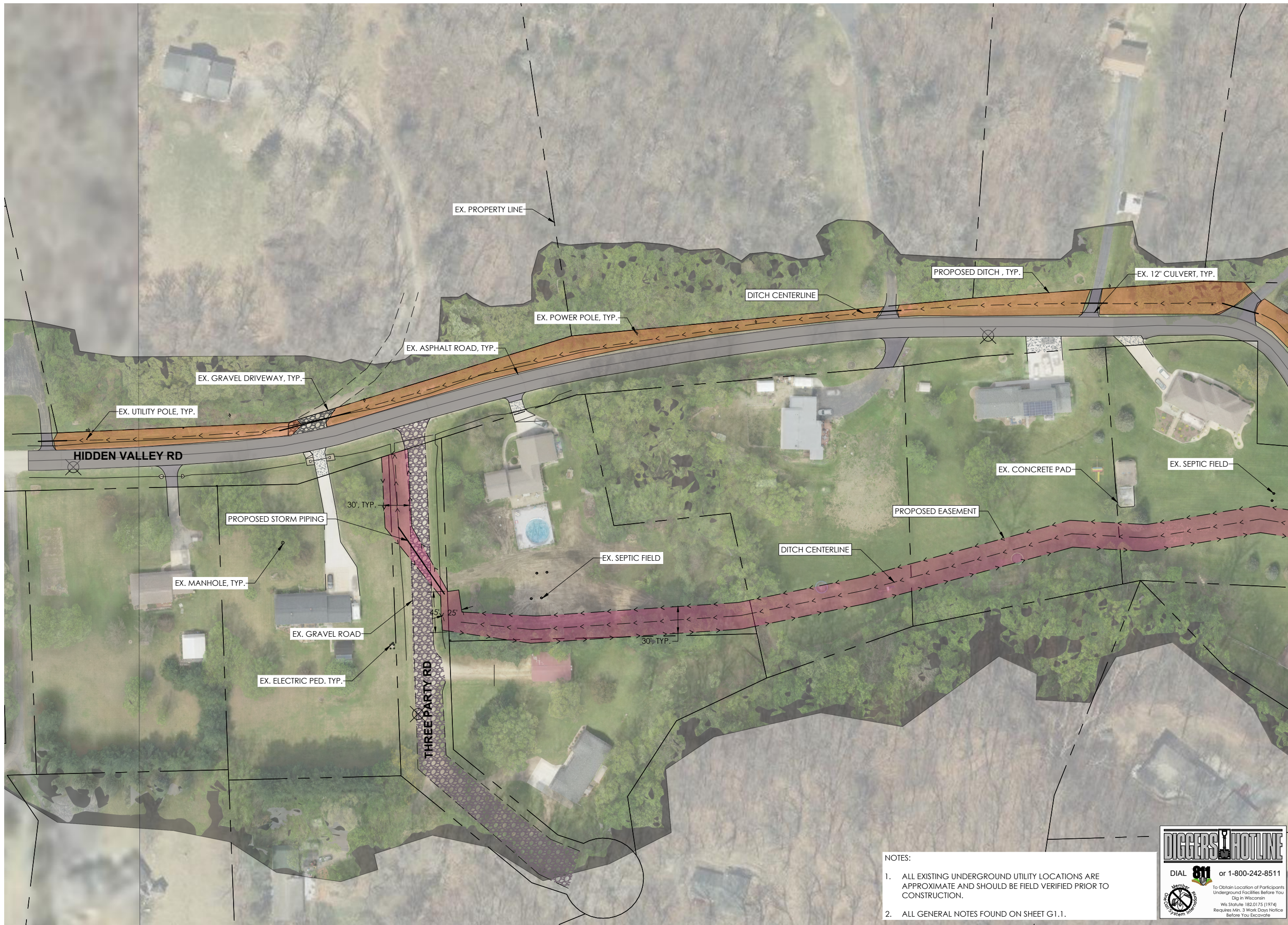


- NOTES:
1. ALL EXISTING UNDERGROUND UTILITY LOCATIONS ARE APPROXIMATE AND SHOULD BE FIELD VERIFIED PRIOR TO CONSTRUCTION.
 2. ALL GENERAL NOTES FOUND ON SHEET G1.1.

DIGGERS HOTLINE
 DIAL 811 or 1-800-242-8511
 To Obtain Location of Participants Underground Facilities Before You Dig in Wisconsin
 Wis Statute 182.0175 (1974)
 Requires Min. 3 Work Days Notice Before You Excavate

DRAWN BY: ARS
 REVIEWED BY: LAL
 ISSUE DATE: JULY 2023
 GEC FILE NO.: 2-0123-44F
 SHEET NO.: **C2.0**

G:\Current Files L\Onalaska, Town of\2023 Municipal Engineering Services\2-0123-44F Hidden Valley Drainage 2023\CAD 2-0123-44F\2_CIVIL\Production Drawings\1-C2.0_PSP_2-0123-44F-0.dwg, 7/26/2023 11:28:24 AM, 1:1



- NOTES:
1. ALL EXISTING UNDERGROUND UTILITY LOCATIONS ARE APPROXIMATE AND SHOULD BE FIELD VERIFIED PRIOR TO CONSTRUCTION.
 2. ALL GENERAL NOTES FOUND ON SHEET G1.1.

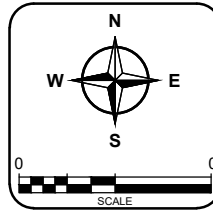
DIGGERS HOTLINE
 DIAL 811 or 1-800-242-8511
 To Obtain Location of Participants Underground Facilities Before You Dig in Wisconsin
 Wis Statute 182.0175 (1974)
 Requires Min. 3 Work Days Notice Before You Excavate



General Engineering Company
 P.O. Box 340 • 916 Silver Lake Dr. • Portage, WI 53901
 608-742-2169 (Office) • 608-742-2592 (Fax)
 www.generalengineering.net
This document contains confidential or proprietary information of General Engineering Company. Neither this document nor the information herein is to be reproduced, distributed, used or disclosed either in whole or in part except as specifically authorized by General Engineering Company.

**PROPOSED SITE PLAN
 HIDDEN VALLEY DRAINAGE
 TOWN OF ONALASKA
 LA CROSSE COUNTY**

REVISIONS	NO.	BY	DATE



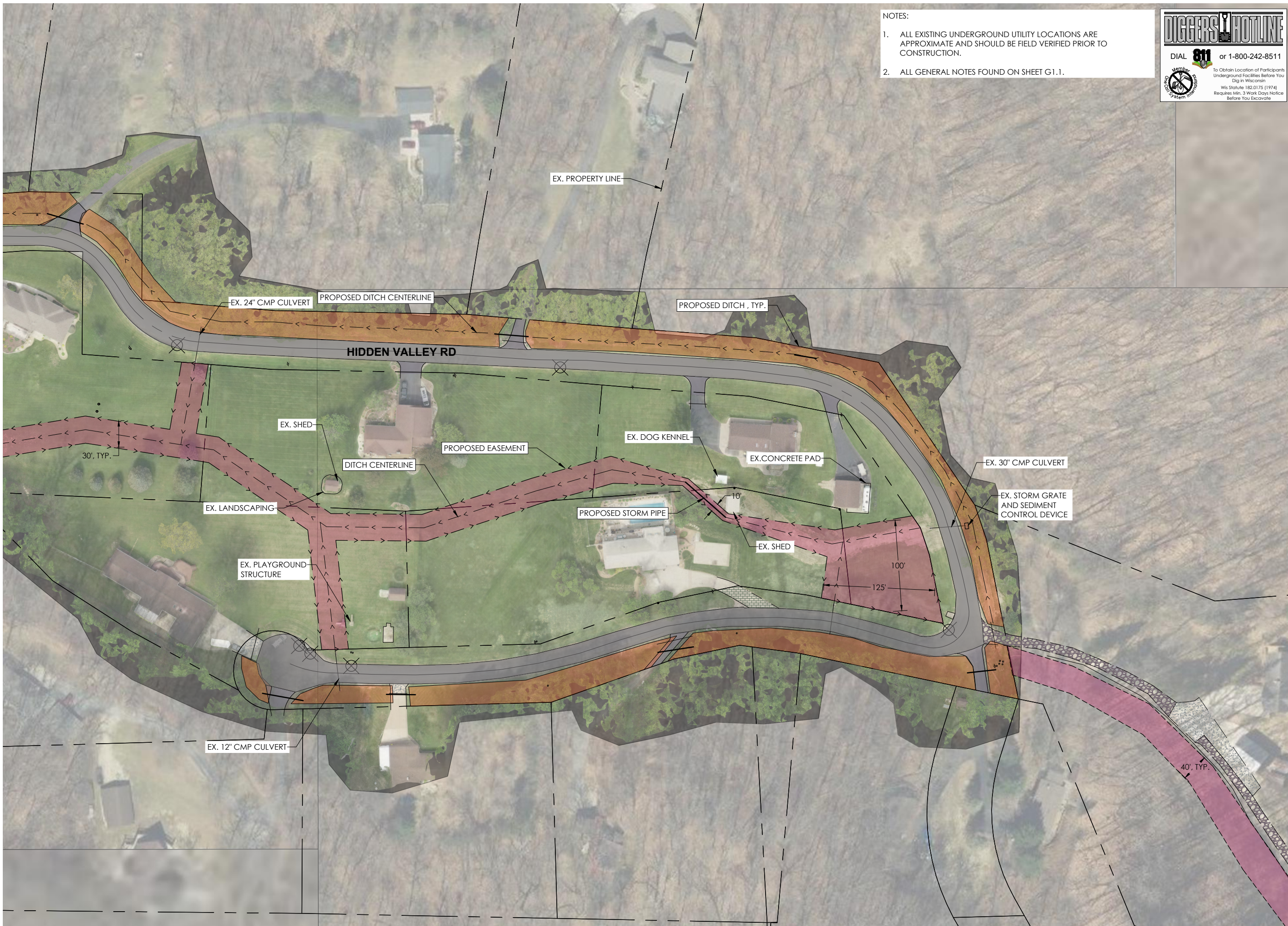
DRAWN BY	ARS
REVIEWED BY	LAL
ISSUE DATE	JULY 2023
GEC FILE NO.	2-0123-44F
SHEET NO.	C2.1

NOTES:

1. ALL EXISTING UNDERGROUND UTILITY LOCATIONS ARE APPROXIMATE AND SHOULD BE FIELD VERIFIED PRIOR TO CONSTRUCTION.
2. ALL GENERAL NOTES FOUND ON SHEET G1.1.

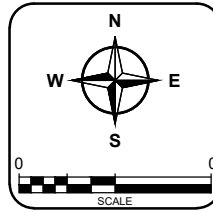
DIGGERS HOTLINE
 DIAL **811** or 1-800-242-8511
 To Obtain Location of Participants Underground Facilities Before You Dig in Wisconsin
 Wis Statute 182.0175 (1974)
 Requires Min. 3 Work Days Notice Before You Excavate

GEC
General Engineering Company
 P.O. Box 340 • 916 Silver Lake Dr. • Portage, WI 53901
 608-742-2169 (Office) • 608-742-2592 (Fax)
 www.generalengineering.net
This document contains confidential or proprietary information of General Engineering Company. Neither this document nor the information herein is to be reproduced, distributed, used or disclosed either in whole or in part except as specifically authorized by General Engineering Company.



PROPOSED SITE PLAN
HIDDEN VALLEY DRAINAGE
TOWN OF ONALASKA
LA CROSSE COUNTY

REVISIONS	NO.	BY	DATE



DRAWN BY	ARS
REVIEWED BY	LAL
ISSUE DATE	JULY 2023
GEC FILE NO.	2-0123-44F
SHEET NO.	C2.2

NOTES:

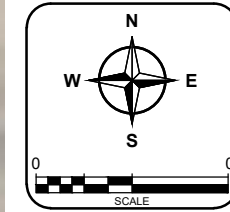
1. ALL EXISTING UNDERGROUND UTILITY LOCATIONS ARE APPROXIMATE AND SHOULD BE FIELD VERIFIED PRIOR TO CONSTRUCTION.
2. ALL GENERAL NOTES FOUND ON SHEET G1.1.

DIGGERS HOTLINE
 DIAL 811 or 1-800-242-8511
 To Obtain Location of Participants Underground Facilities Before You Dig in Wisconsin
 Wis Statute 182.0175 (1974)
 Requires Min. 3 Work Days Notice Before You Excavate

GEC
General Engineering Company
 P.O. Box 340 • 916 Silver Lake Dr. • Portage, WI 53901
 608-742-2169 (Office) • 608-742-2592 (Fax)
 www.generalengineering.net
This document contains confidential or proprietary information of General Engineering Company. Neither this document nor the information herein is to be reproduced, distributed, used or disclosed either in whole or in part except as specifically authorized by General Engineering Company.

**PROPOSED SITE PLAN
 HIDDEN VALLEY DRAINAGE
 TOWN OF ONALASKA
 LA CROSSE COUNTY**

REVISIONS	NO.	BY	DATE



DRAWN BY	ARS
REVIEWED BY	LAL
ISSUE DATE	JULY 2023
GEC FILE NO.	2-0123-44F
SHEET NO.	

C2.3

