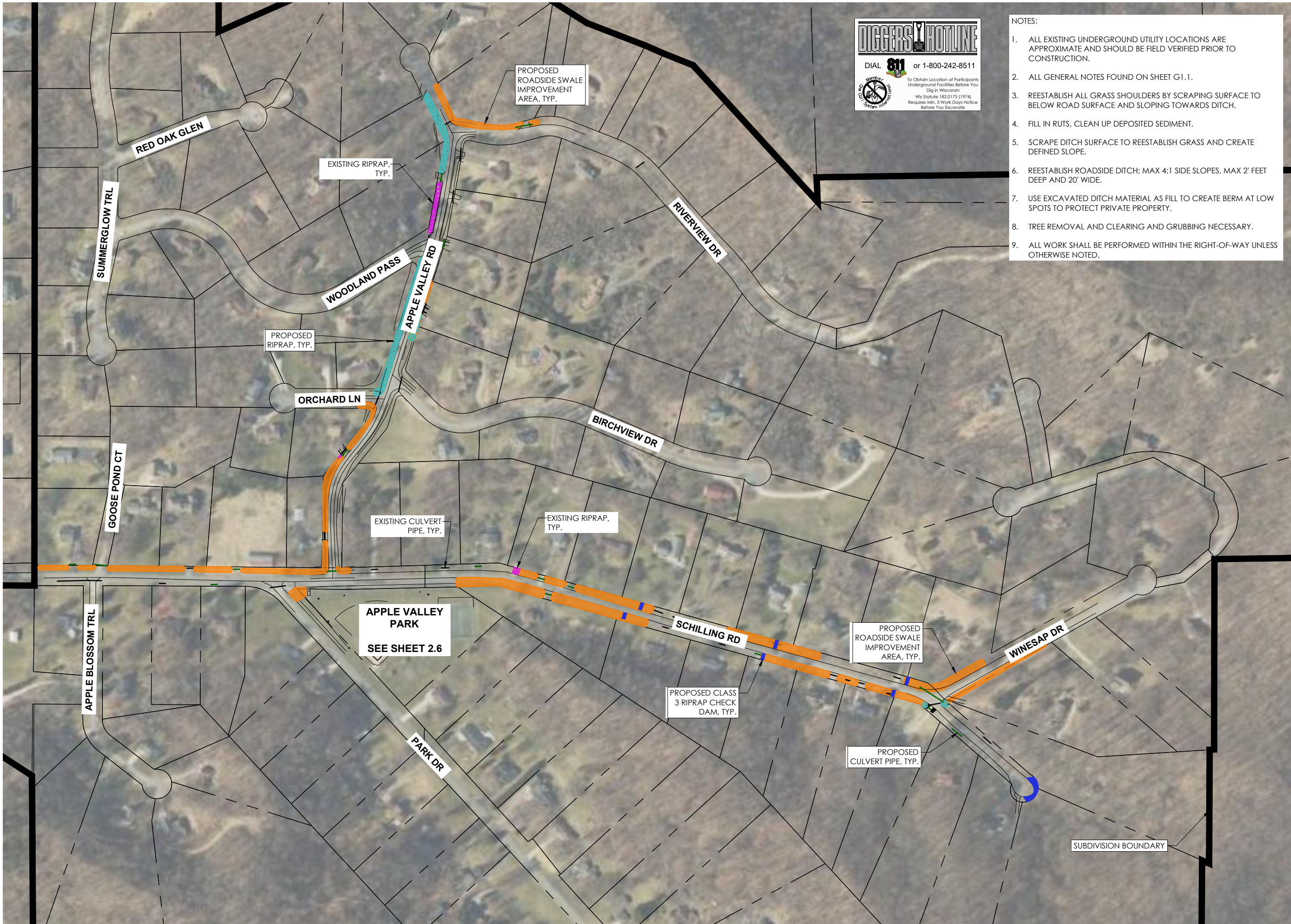


G:\Current Files L-Onalaska, Town of\2022 Municipal Engineering Services\2-0122-44F Apple Valley Master Plan\CAD 2-0122-44 F12_CIVIL\Production Drawings\1-C2.0-FSP-2-0122-44F-0.dwg, 4/19/2023 2:07:14 PM, 1:1



DIGGERS HOTLINE
 DIAL **811** or 1-800-242-8511
 To Obtain Location of Participants Underground Facilities Before You Dig in Wisconsin
 Wis Statute 182.0175 (1974)
 Requires Min. 3 Work Days Notice Before You Excavate

- NOTES:
1. ALL EXISTING UNDERGROUND UTILITY LOCATIONS ARE APPROXIMATE AND SHOULD BE FIELD VERIFIED PRIOR TO CONSTRUCTION.
 2. ALL GENERAL NOTES FOUND ON SHEET G1.1.
 3. REESTABLISH ALL GRASS SHOULDERS BY SCRAPING SURFACE TO BELOW ROAD SURFACE AND SLOPING TOWARDS DITCH.
 4. FILL IN RUTS, CLEAN UP DEPOSITED SEDIMENT.
 5. SCRAPE DITCH SURFACE TO REESTABLISH GRASS AND CREATE DEFINED SLOPE.
 6. REESTABLISH ROADSIDE DITCH; MAX 4:1 SIDE SLOPES, MAX 2' FEET DEEP AND 20' WIDE.
 7. USE EXCAVATED DITCH MATERIAL AS FILL TO CREATE BERM AT LOW SPOTS TO PROTECT PRIVATE PROPERTY.
 8. TREE REMOVAL AND CLEARING AND GRUBBING NECESSARY.
 9. ALL WORK SHALL BE PERFORMED WITHIN THE RIGHT-OF-WAY UNLESS OTHERWISE NOTED.

GEC
General Engineering Company
 P.O. Box 340 • 916 Silver Lake Dr. • Portage, WI 53901
 608-742-2169 (Office) • 608-742-2592 (Fax)
 www.generalengineering.net
This document contains confidential or proprietary information of General Engineering Company. Neither this document nor the information herein is to be reproduced, distributed, used or disclosed either in whole or in part except as specifically authorized by General Engineering Company.

PROPOSED SITE PLAN
APPLE VALLEY SUBDIVISION
TOWN OF ONALASKA
 TOWN OF ONALASKA
 LA CROSSE COUNTY, WI

REVISIONS	NO.	BY	DATE

0
 SCALE

DRAWN BY	SEB
REVIEWED BY	LAL
ISSUE DATE	APRIL 2023
GEC FILE NO.	2-0122-44F
SHEET NO.	C2.0